

## TORO DEL MAR



### Main Characteristics

<b>Type</b>	Sloop, cutter rigged	<b>Build Number</b>	N° 378
<b>Model</b>	Jongert 2200M	<b>Hull material</b>	Aluminium
<b>Shipyard</b>	Jongert B.V.	<b>Length O. A.</b>	22.08 m / 72'5"
<b>Architect</b>	Ron Holland	<b>Length W. L.</b>	17.85 m / 58'6"
<b>Designer</b>	Ron Holland/Peter Sijm	<b>Beam</b>	5.75 m / 18'10"
<b>Year</b>	1994/95	<b>Draft</b>	3.80 m / 12'5"
<b>Registry</b>	Duisburg, Germany	<b>Displacement</b>	46t
<b>Lying</b>	Imperia	<b>Engine</b>	MTU 6R183AA61 159 kW
<b>Price</b>	550.000€	<b>Accommodation</b>	6 guests in 3 cabins
<b>VAT Status</b>	EU-Vat paid		

## INTRODUCTION

---

The Jongert 220M TORO DEL MAR is high pedigree yacht, meticulously crafted by the renowned Dutch shipyard and designed by the renowned naval architect Ron Holland. She's a fantastic cruiser/racer, showcasing Jongert's unwavering commitment to excellence in quality and finishing.

Her outstanding sailing capabilities are attributed to cutting-edge features, including a carbon mast, carbon hydraulic in-boom furling, and hydraulically reefed fore sails, ensuring remarkable performance even in light winds. Further enhancing maneuverability, TORO DEL MAR is equipped with both bow and stern thrusters, facilitating easy handling even in challenging conditions.

Constructed with a robust aluminum hull and a meticulously welded keel, TORO DEL MAR offers very high safety margins, making it the ideal choice for global voyages in both comfort and security.

The thoughtfully designed deck layout comprises an aft sailing cockpit, a nice sunbathing area, and a spacious semi-enclosed deck saloon, perfect for al-fresco dining.

The interior, beautifully crafted in teak, is still in good condition. This luxurious yacht comfortably accommodates up to six guests, offering a generous aft owner's stateroom, a large saloon amidship, and two forward guest cabins, each with its own en-suite bathroom.

TORO DEL MAR is a top-quality blue-water cruiser of lasting value, ready to cruise immediately and worth a viewing.

### KEY FEATURES :

- **High pedigree aluminium sloop, superior quality of built**
- **Reliable yacht for world-cruising**
- **Fantastic sailing performances for safe and fast crossings**
- **Carbon mast and carbon in-boom furling, bow and stern thruster, easy to sail by small crew**
- **Good deck layout with large steering cockpit and well-protected deck saloon for all-weather sailing**

## CONSTRUCTION

---

Hull:	Aluminium
Superstructure:	Carbon mast & boom
Deck:	Teak deck oiled with teak sealer
Windows:	4 Lewmar deck hatches 10 opening portholes 8 fixed Jongert superstructure windows 4 fixed Jongert wheelhouse windows – one opening in center for ventilation
Insulation	Thermic/Phonic: the hull has been covered in foam from deck until waterline

## PAINT APPLICATION

---

Superstructure:	Awlgrip off white, repainted 2016
Hull:	Awlgrip flag blue, repainted 2016
Underwater:	International Trilux 33, underwater surfaces sandblasted, and epoxy primed in 01/2010

## **RIG**

---

Sailplan:	Cutter rigged sloop
Standing Rigging:	all rod rigging & deck chainplates replaced 04/2012
Running Rigging:	Halyards replaced 4/2012, Main sail, Stay sail and Genoa sail sheets new 2015
Mast:	NIRVANA carbon fiber mast
Boom:	NIRVANA in-boom furling, serviced 05/2012
Spinnaker boom:	NIRVANA adjustable carbon boom
Furlers:	RECKMAN Staysail & Genoasail hydraulic furlers, factory serviced by Reckman 05/2012

## **SAILS/AWNINGS**

---

Foresails:	NORTH SAILS furling genoa in Dyneema 03/2010, 140 m <sup>2</sup> NORTH SAILS furling staysail Dyneema 03/2009, 70 m <sup>2</sup>
Mainsail:	ELVSTROM furling main sail in Vectran, Epex Membrane 03/2013, 120 m <sup>2</sup>
Spinnaker:	BEILKEN asymmetric Spinnaker with Snuffer, 300 m <sup>2</sup>
Winches:	1 LEWMAR hydr. 65 on Mast, 2 LEWMAR hydr. 1000 for genoa, 2 ANDERSEN man. 78 for staysail, 5 ANDERSEN 66 manual, 2 ANDERSEN 56 for main traveller, 1 ANDERSEN man. 40 for topping lift
Awnings:	1 awning in two pieces (Port and Stb)

## **MACHINERY/PROPULSION**

---

Main Engine:	MTU – 6R183-AA61 Diesel, naturally aspired, 6 cylinders, 159 kW Engine Hours in 10/23 = 16.000 hrs – serviced in 2023
Generator:	NORTHERN LIGHTS, M844LW3, 16Kw, single phase, 24v, isolated earth, 220V, 50Hz, new 2016. Engine Hours in 10/23 = approximately 250 hrs
Gearbox:	TWIN DISC
Prop Shaft:	RUBBER DESIGN in oil bath, roller & thrust bearings in enclosed shafting
Propeller:	MAXPROP three blade, feathering propeller, Jongert style hydr. Shaft brake in engine room
Monitoring:	from helm stations, deck house or engine room

## **AUXILIARY EQUIPMENT**

---

Water maker:	HEM series 25, 130litres per hour, 764 operational hrs
Power Pack:	LEWMAR Commander 6, 24V. Serviced 2016
Bow thruster:	HYDROMAT 15Kw, retractable. Serviced 2016
Stern thruster:	HYDROMAT 15Kw, retractable. Serviced 2016
Air conditioning:	MARINE AIR, 3 units, 9000 btu forward cabin, 16.000 btu saloon, 12.000 btu aft cabin
Steering gear:	LEWMAR MAMBA torque tube mechanical steering, twin helm

## **TANKAGE**

---

Fuel tank:	1'400 ltr
Fresh water tank:	1'300 ltr
Grey water tank:	300 ltr
Black water tank:	300 ltr

## **PERFORMANCE**

---

Max. speed:	under power	10kn
	under sail	12kn
Cruising speed:	under power	7.8kn at 1'300rpm

## **ELECTRIC SYSTEM**

---

Voltages:	24V/220V single phase
Inverter (V/W):	1 x VICTRON 24V/3000W, new 2021
Battery charger:	VICTRON Skylla 2 x TG 24V, 100amp/hr.
Battery banks:	2 x Lithium battery banks (32 x 3V), each 1120Ah, in total 2240Ah, new in 2021/2023
Shore power:	64 Amp, single phase 220V
Lightning:	LED lights and Halogen lights throughout the yacht

## **NAVIGATION EQUIPMENT**

---

Autopilot:	SEGATRON, three control station on Lewmar Mamba drive
Compass / gyro:	ROBERTSON fluxgate, VDO fluxgate, SESTREL MOORE magnetic
GPS / plotter:	B@G 1 x Zeus2 Chart plotter w. GPS, new 2020
Radar:	B & G 48Nm, open scanner, new in 2019
AIS:	SIMRAD, AI50, class B, new 2014 – transmit & receive
Navtex:	FASTNET radio
Barograph:	VETUS Meteoliner
Log:	RAYMARINE ST70 sailing system
Depth sounder:	RAYMARINE ST70 sailing system
Wind speed + direction:	RAYMARINE ST70 sailing system
Close-hauled and running:	RAYMARINE ST70 sailing system
Rudder indicator:	VDO 2 x rudder angle indicator
Searchlight:	Handheld
Horn:	Yes

## **COMMUNICATION**

---

VHF radio telephone:	NAVMAN DCS VHF, ICOM handheld
Internet:	STARLINK Internet, new in 2023

## ENTERTAINMENT

---

TV/Video:	LG TV 300mm
Radio/HiFi:	LG Stereo radio in salon and owner's cabin

## ACCOMMODATIONS

---

Owner:	
Cabins:	one aft with two berths
Bathroom:	en-suite with shower
Guests:	
Cabins:	two forward
Berths:	each two berths, the underneath berth can be extended to form a larger berth
Bathrooms:	two, each cabin with en-suite
Saloon:	Yes, with table, settee and reading desk.

## APPLIANCES

---

Galley equipment:	Tea kettle, toaster
Refrigerator:	GRUNERT AR-50, 24v dc, seawater cooled, coldplate
Deep freezer:	GRUNERT AR-59, 24v dc, seawater cooled, coldplate
Bottle cooler:	GRUNERT Baysider 24v dc, aircooled, evaporator plate
Microwave:	ETNA- combi magnetron
Stove:	ETNA- Convection oven
Washing machine:	MIELE WT Wash&Dry Power wash 2.0, new in 2022
Ice maker:	Medion

## DECK EQUIPMENT

---

Boarding:	Side boarding step & ladder
Gangway:	via opening stern door
Bathing platform:	Yes, opening stern door with remote control
Bathing ladder:	Yes, custom made
Deck shower:	Yes
Anchors:	Plow anchor - 165 lbs installed in bow with 100m chain, emergency anchor + including a spare rope
Windlass:	LEWMAR 2500 hydraulic with chain counter and remote control from aft cockpit
Deck wash system:	Deck & anchor wash system with sea water on fore deck
Cushions:	Cockpit cushions blue/white stripe and sunbathing cushions beige

## TENDER

---

Tenders:	1 x QUICKSILVER 275 new 2022
Engine (Tender):	YAMAHA 8hp, new 2001

## **SAFETY**

---

Life raft:	VIKING type 8ukl, 8 Passengers, Solas B, service til 21./3/2017
Life jackets:	4 inflatable with Harness, 6 adult SOLAS type B, 2 child type 3
Bilge alarm:	Jongert bilge alarm system throughout the bilge for each compartment
Fire-extinguishers:	4x2kg dry chemical, one 5kg CO2
EPIRP:	GME class 2 GMDSS cat 1 plus GPS, model MT403fg-e999f. Valid until 9/2017
SAFE:	SERCAS safe in owner cabin

## **OTHERS**

---

Complete set of original technical manuals

## **SIGNIFICANT MAINTENANCE WORKS**

---

### **2010**

- Sandblast underwater surfaces to remove excess Antifouling load, new application of Epoxy Primer, fairing of hull and again Epoxy Primer application, Antifouling application with Trilux 33. International Epoxy System applied under supervision of the International Paints technical representative Mr Dennis Moshofsky.
- Rudder bearing replaced
- Replace cockpit drain seacocks, ball valves
- Replace Lewmar anchor winch gearbox
- Install New Raymarine ST70 sailing instrument system
- Replace Autopilot servo motor

### **2011**

- MTU main engine service, 12.250hrs
- New Service battery bank alternator
- Rebuild start battery bank alternator
- Replace fan belts
- New starter motor
- Injector service
- Injector Pump service
- Replace high pressure injector fuel lines
- Adjust valve clearance
- Service two oil cooler
- Service heat exchanger
- Genoa replaced, North dyneema

### **2012**

- 8-year mast survey
- All rod standing rigging replaced
- Chain plates removed and replaced
- Roller boom serviced

- Mast jack serviced
- Reckman hydraulic furlers serviced by Reckman
- Hydraulic backstay cylinders serviced
- Boom vang serviced

### **2013**

- Mainsail replaced w. Elvstrom Vectran
- Lewmar deck hatches and rubber seals 3x replaced
- Remove and service all Lewmar torque tube universal joints on steering system

### **2014**

- MTU main engine service:  
Service both alternators  
Steimel sea water and bilge pump, type KB bronze, replaced  
Engine water cooling pump serviced  
PTO rubber element replaced  
V-belts replaced  
Hydraulic filters changed  
All rubber hoses in cooling system replaced  
Dry exhaust insulation replaced  
Dry exhaust flex link replaced
- Propeller shaft:  
Exterior mechanical oil seal of propeller shaft replaced

### **2015**

- 24V Service battery bank replaced with Exide gel batteries
- 24V Start battery bank for engine replaced with Optima Blue Top

### **2016**

- Repaint hull superstructure
- Remove super structure windows, epoxy prime frames, replace gaskets, remount
- Navtec hydraulic panel and pump service
- Lewmar power pack service
- Hydraulic steel through-bulkhead pipes replaced
- High pressure hydraulic hoses all replaced
- Bow- and Stern thruster hydraulic blocks serviced
- Bow- and Stern thruster cases removed, sandblasted, epoxy primed, painted and re-installed
- Bow- and Stern thruster axle seals replaced
- Hot water boiler replaced
- Northern Lights generator replaced
- Sihi main electric bilge pump rebuild
- Sealand black water diaphragm pump rebuild
- Aft cockpit teak seats rebuild
- Window covers on wheelhouse replaced
- Stemhead anchor cartridge shaft, bearings and rollers replaced



- Anchor chain replaced
- B&G Zeus chart plotters installed
- All sailing winches serviced
- Garage rubber decking replaced
- Hydraulic halyard tensioner cylinders serviced
- Sun cushion covers replaced
- Segatron autopilot relay box serviced
- Air condition sea water control valves replaced

## **2017**

- Cockpit cover new
- Main sail cover new
- Lewmar aft cabin hatch new
- Interior varnish touch up where necessary
- Exterior paint touch up where necessary
- Steering compass new 2x
- Segatron course-setter exterior new
- Infrared remote controller sensor for transom door new
- Aircondition: flexible ducts renewed in salon & water maker lift pump new

## **2022**

- 1 x VICTRON inverter 24V / 220V with 3000W
- 2 x VICTRON Lithium battery banks 32 x 3V, each 1120Ah, in total 2240Ah
- 2 x 12V VICTRON Energy, 24v 240Ah in 2023
- 1 x B & G ZEUS Chart plotter 2019 with overlay in 2020
- 1 x MIELE wash & dry Powerwash 2.0 in 2020
- 1 x Dinghy QUICKSILVER 275 from 2023
- 1 x Plow anchor 75 kg - Delta
- 1 x custom made bathing ladder for Stb side in 2022
- 1 x DYSON Hoover with accu in 2019
- New leather upholstery in Salon in 2018
- New mattresses in all cabins 2018
- New captain's chairs new in 2018
- New upholstery in cockpit in 2018
- 1 x B & G Radar, 48 Nm with open scanner
- New cockpit cover in 12/2023
- Stern thruster completely overhauled 12/2023
- 1 x STARLINK internet new in 2023

Haas International offers the details of this vessel in good faith but cannot guarantee or warrant the accuracy of this information nor warrant the condition of the vessel. A buyer should instruct his agents, or his surveyors, to investigate such details as the buyer desires validated. This vessel is offered subject to prior sale, price change, or withdrawal without notice.



## TORO DEL MAR



Bow





Dinghy garage



Foredeck





Deck



Sunbathing area





Steering cockpit



Center cockpit and nav stations





Salon



Nav station





Owner cabin



Guest cabin



Owner bathroom



Guest bathroom



Galley



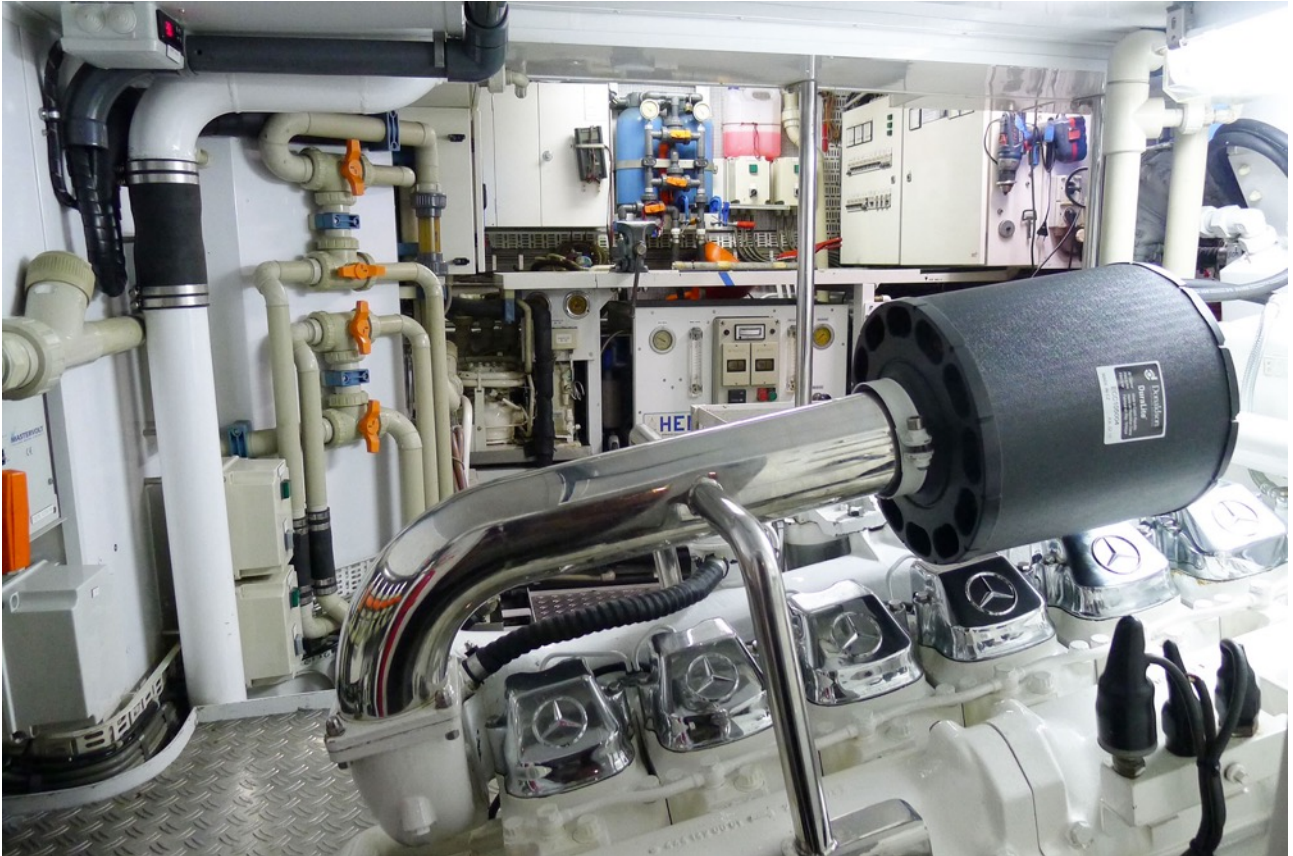


Control panel in saloon



Engine room

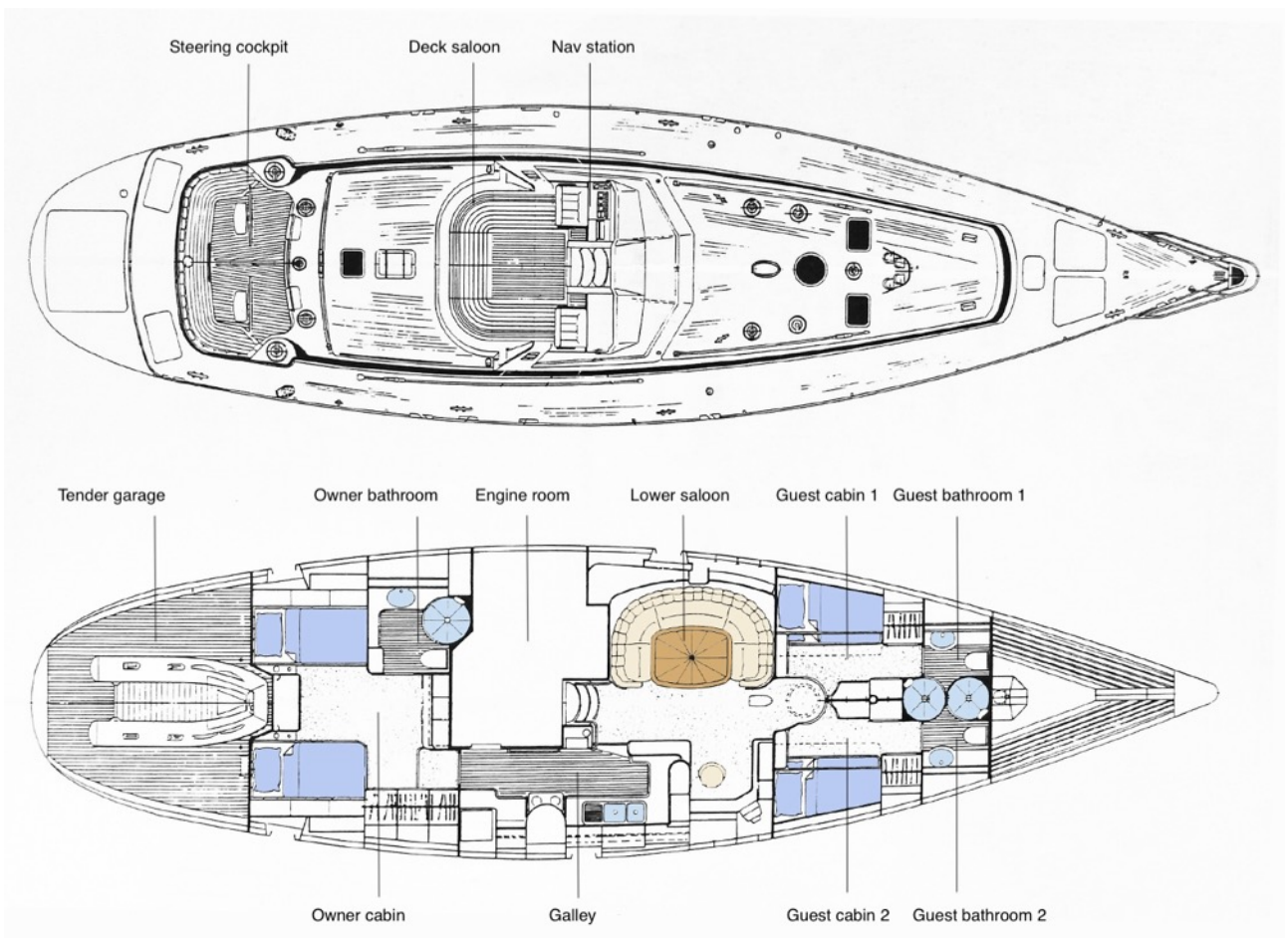




Engine room







Deck & interior layout