

## SCARENA



### Main Characteristics

<b>Type</b>	Sloop	<b>Construction</b>	Steel/Aluminium
<b>Model</b>	Jongert 2900M	<b>Length O.A.</b>	29.77 m / 97.64'
<b>Shipyard</b>	Jongert BV, Holland	<b>Length O.D.</b>	27.00 m / 88'6"
<b>Architect</b>	Jongert Design Team	<b>Length W.L.</b>	24.50 m / 80'4"
	Doug Peterson	<b>Beam</b>	6.70 m / 21'97"
<b>Int. Designer</b>	Jongert Design Team	<b>Draft</b>	4.11 m / 13'5"
	Peter Sijm	<b>Displacement</b>	144 t.
<b>Year</b>	1995	<b>Sail area</b>	932 m <sup>2</sup>
<b>Refit</b>	2006-07, 2012, 2016-17	<b>Engines</b>	Mercedes MTU 345 Hp @ 2.300 rpm
<b>Registry</b>	British Virgin Islands	<b>Cruising speed</b>	9 knots
<b>Classification</b>	Germanischer Lloyd -MCA	<b>Max speed</b>	12 knots
<b>Lying</b>	Barcelona, Spain	<b>Accommodation</b>	8 guests in 4 cabins
<b>Price</b>	1.990.000 €		4 crew in 2 cabins
<b>VAT Status</b>	Not paid		

### INTRODUCTION

---

SCARENA is a high-quality yacht built by Jongert and one of the safest and most comfortable cruising yachts in her size. She was built for an experienced sailor with the best materials chosen and has a huge list of extras incorporated into build including a host of cleverly-engineered design features.

She is a cruiser with modern-styled aluminium superstructure and a sturdy steel hull. With her direct steering system, she's a joy to helm. Her high-tech sloop rigging with Rondal aluminium tapered mast and park avenue boom gives her powerful sailing performance, backed by a strong Mercedes engine.

SCARENA features a clever and practical deck layout.

Her aft sailing cockpit is particularly well-designed and equipped and has an excellent view over the deckhouse. An appealing sun-bathing area stands between the two cockpits. Forward, the spacious center cockpit with navigation area has a hardtop integrated above the deckhouse, which slides by a pushbutton to the stern to shade and protect the entire seating area. The cockpit can be either completely enclosed or, with an additional sun canopy, the whole spacious cockpit and aft deck can be converted into an airy leisure area. The extra-large aft garage provides ample space for dinghy storage with dive compressor and associated equipment.

Below deck, her elegant and generous interior includes a saloon amidships with spacious dining area, an aft luxurious master stateroom with underwater panoramic window, and three comfortable guest cabins, all en-suite. In contrast to the saloon with teak woodwork, the cabins are finished with Elsberry wood. A completely separated crew area is located in front of the saloon.

SCARENA presents a lot of impressive details to maximize the comfort of guests onboard, such as a special noise/heat/vibration insulation throughout the yacht, dry exhaust on main engine and both generators for silent operation, air intake for ship ventilation in the mast for dry and clean air.

SCARENA is a remarkable example of good design and immaculate construction standards. With her tall cutter rig and her low-profile deckhouse, she's one of the sleekest Jongerts ever built. Not only does she have excellent sailing performance, she also offers luxurious comfort with interior volumes equaling facilities to many much larger sailing yachts.

**Following her substantial refit in Palma de Mallorca in excess of €1.5m in 2016/2017, SCARENA has emerged in a condition that would satisfy the most demanding client. She represents a great value proposition for a discerning sailor.**

**Please find all details of this extensive refit at the end of the technical specification.**

*"Still in first ownership, SCARENA is an extraordinary yacht and a real jewel among the Jongert fleet!*

*I was in charge of the build for the owner and established her specification. I spent in total one year at the Jongert shipyard. Once delivered by Jongert, I sailed as captain of Scarena for 1 ½ years from Holland to Turkey than across the Atlantic into the Caribbean and in summer further to New England.*

*I, therefore, do know SCARENA very well and would be pleased to answer all your questions."*

*Manfred Haas*

## SCARENA – JONGERT 2900M

### MACHINERY

---

MAIN ENGINES HP (KW):	Mercedes MTU 345 hp / 245 kW@ 2'300 rpm completely rebuilt 2016/17 Approx. 550 hours (06/2019)
CYLINDERS:	10
GEAR BOX:	TWINDISC MG5111A
SPEED (MAX.):	12 knots
SPEED (CRUISING):	9 knots
CONSUMPTION:	35 l/h
FUEL SEPARATOR:	RACOR system
RANGE:	1'500 nm
BOWTHRUSTER:	HYDROMAR 45hp/33.3kW retractable and rotatable

### CAPACITIES

---

FUEL CAPACITY:	7'720 liters / 2'040 US gal in 2 tanks
WATER CAPACITY:	3'300 liters / 872 US gal in 2 tanks
WASTE WATER TANK (BLACK):	1'550 l grey and black

### ELECTRICAL SYSTEMS

---

GENERATORS:	1x MTU 51 kW completely rebuilt (W5) 50 hours (06/19) 1x KOHLER 28 kW new 12/2012, serviced 2016/17, 1'200 hours (06/19)
CONSUMPTION:	13 l/h
INVERTER:	MASTERVOLT
TRANSFORMERS / CONVERT.:	MASTERVOLT
BATTERIES:	1 set (4) Power and 1 set (4) Service
BATTERY CHARGER:	MASTERVOLT SHORE POWER: HELIONETIC MARINE type M36-50-6035

### NAVIGATION EQUIPMENT

---

AUTOPILOT:	SEGATRON
COMPASS:	BINACULE Magnetic /Gyro
GPS / PLOTTER:	NAVNET / MAXSEA
SATNAV:	phone and fax; FLEET 33 for e-mails
RADAR:	FURUNO
NAVTEX:	SAT C / Felcom 16
BAROGRAPH:	BOHLKEN Westerland
ECHO SOUNDER:	NAVNET
RUDDER ANGLE INDICATOR:	2 VDO helm & deckhouse

**COMMUNICATION EQUIPMENT**

---

GSM:	yes
VHF-RADIOTEL:	ICOM DSC, helm & deckhouse plus 2 ICOM handhelds
SATCOM:	FLEET 33
FAX:	Satellite
INTERNET:	wireless lan when in port / SFR 3G
INTERCOM:	SIEMENS
EMERGENCY TRANSMITTER:	SAT C

**ANCILLARY MACHINERY**

---

WATER MAKER:	HEM 4,500 l / 24 hrs
HOT WATER HEATER:	NEBIL 3 phrase electric system
AIR CONDITIONING:	MARINE AIR SCW with temperature control in each cabin
HEATING:	MARINE AIR SYSTEMS SCW with temperature control in each cabin

**RIGGING**

---

RIG:	A+Rigging
MAST HEIGHT FROM W.L.:	30.00 m / 98'
MAST:	RONDAL
BOOM:	RONDAL
SPINNAKER BOOM:	RONDAL
REEFING SYSTEM:	long battens with lazy jacks for main, 3 reefs

**SAILS**

---

MAIN:	NORTH SAILS 2016, fully battened, spectra 204 m <sup>2</sup>
GENOA:	No 2, 110%
SPINNAKER:	Multi purpose
STAY:	Yes
SAIL AREA:	932 m <sup>2</sup>

**DECK EQUIPMENT**

---

WINCHES:	LEWMAR 2 x 111 hydraulically, 2 x 58, 1 x 54
WINDLASS:	2 x LEWMAR vertical hydraulic
ANCHOR & CHAIN:	2 x CQR on bow plus 100 m chain each 1 DANFORTH spare forepack
DECK SHOWER:	transom and sidedeck
BATHING LADDER:	stern bathing platform with ladder
GANGWAY:	electronically operated
AWNING:	yes
SUN MATTRESSES:	yes
CANVAS COVER:	yes

### ENTERTAINMENT EQUIPMENT

---

B & G Stereo + B & G Television  
CD charger (10 CD's) in every cabin  
SIEMENS Telephone Central  
GRUNDIG television in crew mess

### SAFETY & SECURITY EQUIPMENT

---

LIFE RAFTS: 2 x BFA 8 person  
LIFE JACKETS: 14 adult plus 2 child  
DISTRESS FLARES: yes  
EPIRB: yes + SART  
BURGLAR ALARM: A. DE KEIZER  
SAFE: Owners cabin and captain cabin  
BILGE ALARM: yes  
FIRE-EXTINGUISHING INST: CO2 Engineroom  
FIRE-EXTINGUISHER: all cabins  
MCA certified, MCA compliant, classed to Germanischer Lloyd

### GALLEY & LAUNDRY EQUIPMENT

---

REFRIGERATOR: 2 Miele  
DEEP-FREEZER: 2 Miele + 1 ADDITIONAL IN THE BILGE, TOTAL 660 L  
BOTTLE COOLER: 1 U-LINE  
ICEMAKER: U-LINE SALOON  
MICRO WAVE OVEN: LG  
STOVE: AEG Competence  
DISH WASHER: MEIKO PROFESSIONAL  
WASHING MACHINE: MIELE  
DRYER: MIELE

### TENDERS & TOYS

---

TENDER: 1 x 4m NOVURANIA  
ENGINE (TENDER): 50 hp (37,3 kW) YAMAHA, 15 hp (11,2 kW) YAHAMA  
WATER SKI: yes  
SNORKELLING EQUIPMENT: for 6  
DIVING EQUIPMENT: for 4  
DIVING COMPRESSOR: BAUER  
OTHERS: 1x surfboard, 1x wakeboard, 2 sea bobs/2007, donuts, 1x nflatable kayak  
Big Game fishing equipment (2 big fishing rods and some smaller ones),

### ADDITIONAL

---

- Underwater window in owner's suite
- Teak woodwork in the saloon, all cabins finished with Elsberry wood
- iPod connection and CD chargers in every cabin
- Special thermal, sound and vibration insulation
- Air for the air-conditioning and heating unit is drawn in from 30 m up from the mast to ensure that it is free from diesel exhaust etc.
- Dry exhaust system on main engine + generators
- DE KEIZER alarms and monitoring
- Hydraulically operated garage with bathing platform

### REFITS

---

#### **REFIT 2003:**

- new paint: hull – mast – superstructures – engine room – bilges
- engine revision
- replacement of the generator
- inspection of the sea cocks
- Air-conditioning etc.

#### **REFIT 2006/07 in the JFA Shipyard, France:**

- Paint of hull incl rig.
- New teak deck
- State-of-the-art navigation, radar and communication equipment
- Main engine renewed at MTU in Kiel
- New KOHLER generator
- New air-conditioning system
- New sails
- Some new soft furnishings like carpets etc
- Final refit works in Palma de Mallorca winter 2008/09

#### **WINTER 2010-2011:**

- Batteries: Replace all service and power batteries
- MTU / Generators:  
W4 service Main engine and Big Generator.  
Kohler Generator 6000-hour service.
- Mast and Rigging:  
New Spinnaker halyards,  
New Pole topping lift.  
New spinnaker sheets and Pole Guys.
- Safety:  
MCA yearly inspection
- Paint:  
Paint Transom and door.  
Paint waterline

- Varnish:  
All Steps,  
Porthole surrounds in cabins  
Deckhouse Navigation Instrument Covers.  
Owners Cabin desk.  
Communication Computer desk.  
Engine room hatch floor

### **COMPREHENSIVE 2016/17 REFIT FOR APPROX. 1.5M€:**

#### CLASSIFICATION:

- Full Classification (DNV/GL) renewal survey

#### HULL:

- Hull plating thickness survey / Galvanic Corrosion Assessment
- Repair of hull and elimination of corrosion to Class approved standard
- Hydroblasting to remove all old antifoul down to original epoxy-primer
- Filling and fairing
- New antifoul International application EPOXY GP COATING/ INTERFIL EPOXY/INTERPRIME BRONCE
- Removal of old hull exterior speed/depth log fittings
- Improvement of access to forward/aft void spaces
- Forepeak cleaned to bare metal and painted with International Paint system
- Lazarette cleaned to bare metal and painted with International Paint system
- All topside paint removed down to epoxy-primer, new paint applied with International Paint system
- All superstructure paint removed down to epoxy-primer, new paint applied with International Paint system
- Fittings removed and serviced, replaced with new bolts/fixtures and sealing
- Painting of shafts and propellers with PROPSPEED
- Bilge cleaning and painting from forward bilge to aft garage

#### MAST / RIGGING:

- New running rigging
- New mainsail / staysail / genoa by North/Doyle
- Spinnaker serviced,
- Mast unstepped and checked
- Full painting of mast / boom / spinnaker pole
- All mast fittings serviced / replaced
- Rod rigging surveyed, approx 75% replaced as per manufacturers guidelines
- All mast antennae / electrics tested / serviced / replaced as necessary
- Hydraulic hoses replaced
- New mast jack rams
- Mast through deck sleeve refaired and painted
- Reckman furlers serviced at Reckman factory, overhaul headstay
- Navtec rigging cylinders serviced
- Repair of vang crutch / replacement of bent rods & adding reinforcements
- Replacement of mast head sheaves & bearings

### DECK:

- Deck fittings removed / serviced / reinstalled
- Lewmar winches removed / serviced / installed
- Anchor windlasses removed / serviced / Seal and bearing replaced / installed and tested
- Deck hatches removed / perspex replaced / new seals and gaskets installed
- Teak deck re-caulked
- Side boarding ladder mountings modified for easy removal / servicing
- Transom door seal replacement

### GARAGE:

- Floorboard rubber matting partly replaced
- Tender sliding rails replaced
- Tender recovery winch serviced
- Deckhead / walls / bilge repainted
- CO2 fire cylinder removed / serviced / reinstalled
- CO2 cylinder connection hosing replaced
- CO2 cylinder mounting system repaired and modified
- Dive compressor serviced and painted
- Teak racking sanded / repaired
- Shore power transformer serviced
- Shore power controls serviced
- Freshwater filter serviced / new filters
- Main engine exhaust piping replaced
- Emergency steering gear serviced and painted
- Steering / helm box steel repaired and modified for better draining
- Electrical connections and sockets serviced / repaired
- Ventilation serviced and repaired
- Passerelle serviced and repaired

### ELECTRIC / ELECTRONIC:

- Batteries load tested / replaced where necessary
- Electrical systems assessed for Galvanic reactions / Earth integrity modified where necessary Main switchboard battery charging controllers serviced / replaced
- Lighting system serviced
- Switches and plug sockets upgraded
- Communication systems inverter replaced
- Bilge system alarm sensors serviced and replaced where necessary
- Fire alarm system upgraded / repaired
- All Fire extinguishers serviced,
- Liferafts serviced including all lifesaving equipment
- Breathing apparatus new
- Medical support offshore supply kit upgraded

### NAVIGATION / COMMUNICATION:

- Navigation and communication computers upgraded
- B & G system serviced and repaired where necessary
- Gyro compass serviced
- Autopilot and interface serviced
- Depth and speed sensors serviced



### ENGINE ROOM / MACHINERY:

- Main engine W5 service by MTU
- Main generator W5 service by MTU
- Kohler generator service by Kohler agent
- Gearbox service
- Shaft alternators serviced
- Shaft removed / bearings and seals replaced according to Rubber Design Factory advice
- Hydraulic PTO serviced
- Hull valves and fittings removed / tested and serviced according to DNVGL requirements
- Fire / bilge pump replaced Fire / bilge manifold serviced and repainted
- Main switchboards cleaned and tested
- Main hydraulic manifold serviced
- Fore and aft hydraulic blocks serviced and repainted
- Old refrigeration system removed
- HEM watermaker overhauled by HEM including sand filter / regulation pump / replace overpressure valve
- Autopilot shaft power pump serviced
- Autopilot power converter serviced
- Autopilot power pack serviced
- All framework and equipment mounts stripped and repainted
- Bilge stripped and repainted with International Paint system
- Seawater pipework and manifold removed / serviced / replaced where necessary and painted
- Air compressor serviced
- Fresh water pump replaced to original specification
- Fresh water storage boiler replaced

### TANKS:

- Fresh water tanks repainted
- Fuel tanks cleaned
- Waste tanks cleaned

### AIR CONDITION:

- Heinen Hopman ventilation units serviced / fan replaced / painted
- Air ducting cleaned / replaced
- Shower ventilation fans serviced / replaced
- AC handlers serviced
- AC circulation pump serviced
- AC compressors serviced / gas pressure tested

### FOREPEAK:

- Anchor chain boxes removed / repaired / repainted
- Floor boards replaced
- Floor metal framework replaced
- Walls deckhead and bilge stripped and repainted
- Access ports cut to forward void spaces
- Anchor stowage system serviced
- Bowthruster hoses replaced
- Bowthruster manual valves serviced
- Pneumatic systems and air supply repaired
- Shelving and work bench removed / stripped / repainted

### INTERIOR:

New mattresses throughout with MCA approved fire treated foam covered with Aloe Vera material  
Saloon sofa new main saloon sofa seats and backrests with new middle density foam and covered with leather  
Corian galley repair  
Miele, Glass ceramic hold  
Oven H 256 1BP

### EXTERIOR:

Cockpit upholstery with new Sunbrella fabrics and added soft foam on top  
Helm seating: re-upholster control seats, backrests and armrests

### EXCLUSIONS

---

A complete list of exclusions is available upon request.

SCARENA – JONGERT 2900M



SCARENA – JONGERT 2900M



SCARENA – JONGERT 2900M



Bathing platform / Dinghy garage

SCARENA – JONGERT 2900M



Foredeck



Aft deck



Sunpads



Central cockpit



Nav station



Saloon





Master stateroom



Master stateroom



Master stateroom



Office corner in master bedroom



Master bathroom with separate toilets



Master bathroom



Twin guest cabin



Twin guest cabin



Guest bathroom



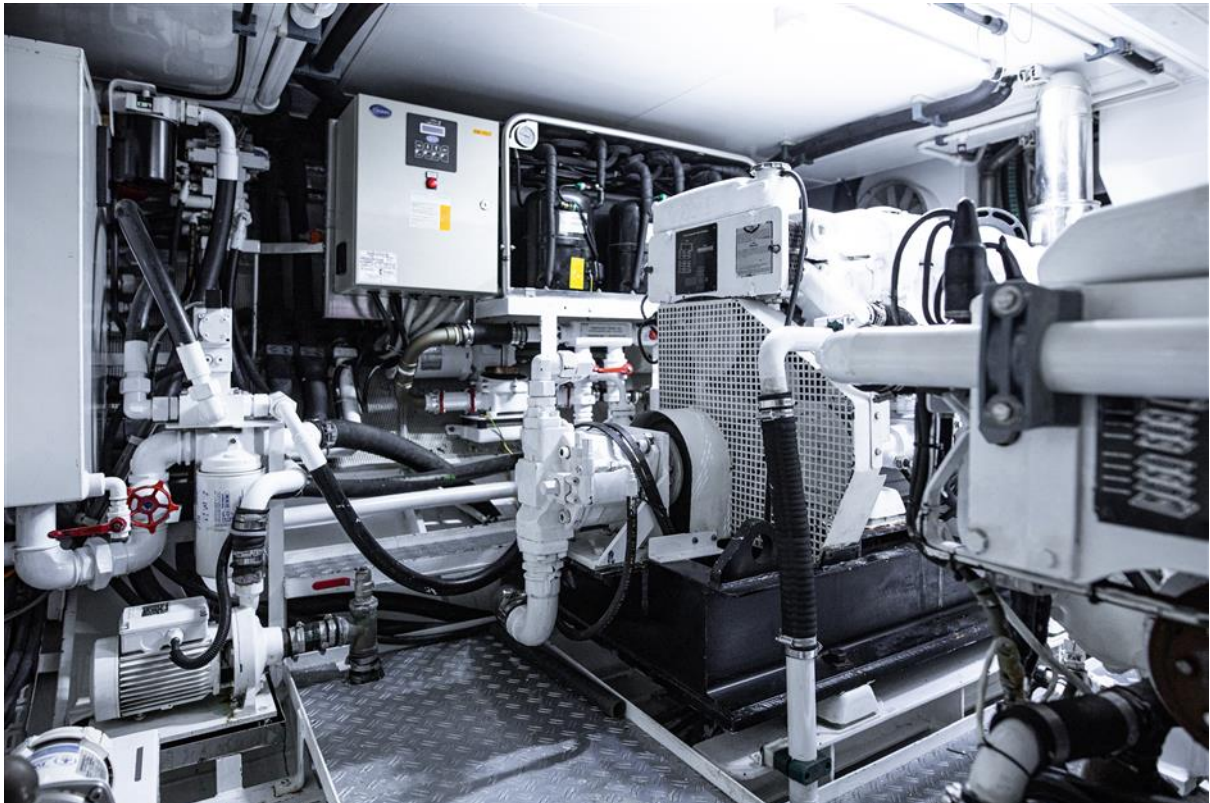
Guest bathroom



Guest / Children cabin



Galley with crew mess

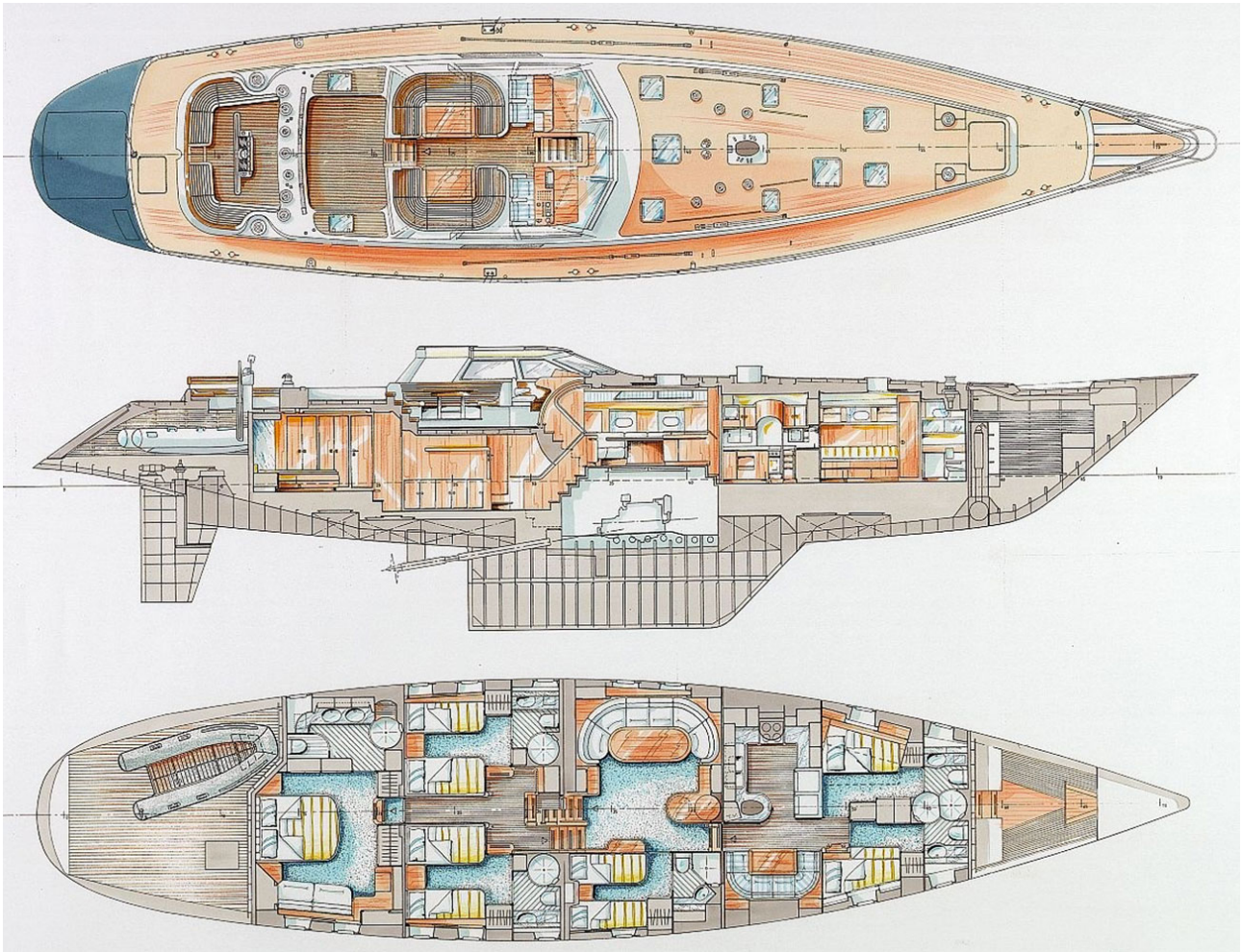


Engine room



Engine room

## SCARENA – JONGERT 2900M



Interior and deck layout

Haas International offers the details of this vessel in good faith but cannot guarantee or warrant the accuracy of this information nor warrant the condition of the vessel. A buyer should instruct his agents, or his surveyors, to investigate such details as the buyer desires validated. This vessel is offered subject to prior sale, price change, or withdrawal without notice.