

## JONGERT 20DS MARGHERITA



### Main Characteristics

<b>Name</b>	Margherita (ex-Inventor)	<b>Hull</b>	N. 318
<b>Type</b>	Cruising Ketch	<b>Hull material</b>	Steel
<b>Model</b>	Jongert 20 DS	<b>Length O. A.</b>	22,46m (73'8")
<b>Shipyard</b>	Jongert B.V., Holland	<b>Length W. L.</b>	16,01m (52'6")
<b>Naval architect</b>	De Vries Lentsch	<b>Beam</b>	5,28m (17'3")
<b>Interior designer</b>	Peter Sijm	<b>Draft</b>	2,70m (8'10")
<b>Year</b>	1984	<b>Displacement</b>	52 t
<b>Registry</b>	Gdansk, Poland	<b>Engine</b>	Mercedes OM 422 W
<b>Lying</b>	Leros Kalymnos, Greece		177 kw @ 2100 rpm
<b>Price</b>	525'000€	<b>Accommodation</b>	6/8 guests in 4 cabins
<b>VAT Status</b>	exempt		

### INTRODUCTION

---

MARGHERITA is a classic Jongert 20DS, designed for very comfortable, safe cruising and built to the well-known Jongert superior standards. She is a true bluewater cruiser, strong and reliable. Thanks to her hydraulic furling system, she can be operated with ease by a very small crew.

MARGHERITA welcomes between six and eight guests. Her large seating area on the aft deck is the ideal place for al-fresco dining or a well-deserved sundowner. The cozy and spacious pilothouse with 360° view is the perfect place in harsher weather conditions.

Below deck, high quality teak paneling and white surfaces dominate the cozy atmosphere, with a large dining saloon and bar, combined with a practical kitchen with ample storage for long passages.

The spacious aft master stateroom is furnished with a large double bed and sofa. The typical Jongert stern windows provides abundant natural light and an appealing feeling. The ensuite bathroom features a shower and a bathtub. The two identical guest cabins forward offer bunk beds and the upper berth can be enlarged to a larger berth. All cabins are en-suite.

The engine room, large and well laid out, allows easy access to all systems for maintenance.

As with every Jongert, MARGHERITA is solidly built and extremely seaworthy. Her superior build quality, her large volume and easy sail handling systems make her the perfect yacht for world cruising in maximum safety and comfort. Her future owner will make a clever choice of top quality and lasting value.

#### KEY FEATURES:

- Classic Jongert with best pedigree
- Superior quality of build
- Exceptional reliability with remarkable seaworthiness
- easy to handle by two persons
- Spacious and comfortable interior

#### Latest improvements with value of app. 80'000 €:

MASE Genset (9.1KvA) remotely controlled;  
New Solar Panels (Victron Energy) for a total of 1.160 Watts at 24VDC with bluetooth dedicated Regulators;  
New Set of Service Batteries (Sonnenschein) for a total of 1.000Ah plus Victron Energy monitoring system;  
New Shore Power Transformer/Regulator rated at 7.000 Watt;  
New winter heaters for better comfort without using A/C or Webasto;  
New UltraMarine stainless steel anchor (custom made and branded) with a weight of **80Kg.**;  
New Security cameras system (indoor, outdoor and engine room) connected to the web and available online;  
Outboard engine for dinghy (Johnson 15HP) + Tender Cover;  
New Shore Power cable (3x4), yellow and covered in black braided textile;  
New Brother Laser color printer;  
New Coltri Diving Compressor in Engine Room + 3 diving bottles;  
New front area awnings for sun shade arranged on stainless steel poles (removable);  
New Pilot House sun protection outdoor cover;  
New Pilot House sun protection sliding ceiling blind;  
New curtains in Salon and front cabins;  
New valuable Indian/Turkish rugs for every space;  
New Complete set of Wardrobes (towels, table cloths, bathrobes) with branded yacht name (MSY Margherita);  
New AIS (Class A, Em-Track); New Outdoor Internet Antenna + Indoor router for WiFi.  
New VHF Icom Radio + Marco Horn;  
New Furuno Satellite Compass on NMEA0183 + New Furuno GPS;  
New spare black water tank exhaust pump (Gianneschi) (it can also be used as spare bilge pump as well);  
New Fender covers branded with yacht name and port of registration (Gdansk, Poland);  
New Plasma TV (43") with optical/bluetooth surround audio system (LG);  
New Salon/Galley fan;

## RIG

---

Standing Rigging	Rod rigg from A-rigging (2001)
Running Rigging	Armare Spectra (2011)
Mast/s	Rondal Aluminium
Boom/s	Rondal Aluminium
Spinnaker boom	2 Rondal Aluminium
Furlers	Main and Mizzen hydraulic inmast furling Rondal Genoa & Staysail hydraulic furlers Rondal

## SAILS/AWNINGS

---

Foresails	North Sail Dacron Genoa, Staysail (2008)
Mainsail	North Sail Dacron (2008)
Mizzen	North Sail Dacron (2008)
Blister	293 m2
Sail area	240 m2
Awning	All areas + complete winter cover
Winches	14 Lewmar manual
Bimini	Inox & PVC

## MACHINERY

---

Main Engine	Mercedes OM 422, 177kW@ 2'100 RPM Hours: 2400 hrs (refit 2014) Consumption: approx. 10 L./h at cruising speed
Generator 1	Isuzu, 4 cyl., 19 KVA, (1999 refit); Necessary for Air Conditioning, Diving Compressor and Water Maker; Consumption: approx. 6 L./hour
Generator 2	Mase Genset 9KVA 2 Cyl. 8KVA remotely controlled (new 2021) Necessary for standard use of appliances (Stoves/Oven, Dishwasher, Washing Machine) Consumption: approx.. 3 L./hour

## AUXILIARY EQUIPMENT

---

Water maker	HP fully automatic 200 L./h (2001)
Bow thruster	Hydromar 30 KW
Air conditioning	Condaria in all Cabins, new 1998 with 2 compressors, specific area individual temperature controllers
Air heater	Webasto, 2 systems (forward and afterward yacht separated control)
Air compressor	AEG 2HP
Diving Equipment	Coltri Compressor, 3x diving bottles (new 2021)
Fuel Cleaning	Alfa Laval System, 1998
Grey-Black Water Treatment	Hamann Super Mini, 1998-2011; Two transfer systems
Water Pumps	Gianneschi Inox Eco-Inox, Copper-Nickel piping 2001 New spare black water tank exhaust pump (Gianneschi)

## TANKAGE

---

Fuel tank	2600 l.
Fresh water tank	2200 l.
Grey-Black water tank	650 l. painted 2012

## PERFORMANCE

---

Max. speed	under power	10 kn
	under sail	10 kn
Cruising speed	under power	9 kn
	under sail	9 kn

## ELECTRIC SYSTEM

---

Engine	2 DC Alternators
Battery charger	210 Ah
Service Batteries	20x Sonnenschein GF06/200Ah Gel type (1000Ah Total) + Victron Energy monitoring system (new 2021)
Start Batteries	3x (one per engine)
Inverters	Victron Energy 3 systems 220VAC/8000W total.
Shore power	220 V / 7000 W rated at 7.000 Watt (new 2021) New Shore Power cable (3x4), yellow and covered in black braided textile (2021)
Solar Panels	Victron Energy, for a total of 1.160 Watts at 24VDC (new 2021) with bluetooth dedicated Regulators
Lighting	LED, 2011

## NAVIGATION EQUIPMENT

---

Autopilot	1x B&G Hydra (2001) / 1x Segatron
Compass / gyro	1x Halycon / 1x magnetic / 1x Furuno SCX-21 SAT Compass (new 2021)
GPS / plotter	1x NobelTech (2001), 1x Furuno GD-1920C, 1x Furuno GP-39 (new 2021)
Radar	1x Furuno (2001) / 1x NobelTech open array (2009)
Navtex	1x Furuno
Barographs	3x Wempe
Log	B&G
Depth sounder	B&G
Wind speed + direction	B&G
Rudder indicator	B&G
AIS	EmTrak A1 Class A, Em-Track (new 2021)
Touch Screens	For NobelTech systems, 2010

## COMMUNICATION

---

Internet	GSM Router with amplified WiFi antenna + Indoor router for WiFi (new 2021)
VHF radio telephone	1x Furuno FM-2721, 1x Icom M424-G (new 2021)
SSB radio telephone	Furuno FS-2570
Computer	Mac + Windows
Printers	1 HP LaserJet B&W; 1 Brother DCP 9020CDW Laser Color (new 2021)

## ENTERTAINMENT

---

TV	1 Samsung LED UHD TV 43" with optical/bluetooth surround audio system (LG) (new 2021)
Sat-TV	KVH TrackVision M5 auto directional antenna, TV Sat Receiver
Radio/CD/MP3	1 Denon ADV-M71 Surround system in Lounge and Pilot House 3 Kenwood players (one in each cabin) with remote control

## ACCOMMODATION

---

Owner:	1 cabin with double bed and ensuite bathroom (shower + bathtub) Separate private staircase aft from deck saloon
Guests:	1 cabin with 2 bunk beds (one is extendable to twin bed) and ensuite bathroom
Crew/guests:	1 cabin with 2 bunk beds (one is extendable to twin bed) and ensuite bathroom
Extra:	1 bunk bed
Saloon :	1 Deck saloon with table and sofa. 1 Lower saloon with round table and Bar; Curtains & UV Protection, 2012
Galley :	Starboard side in saloon
Outdoor Cockpit :	Al fresco dining table and settees.
Porcelains & Cutlery :	French service, extra set of white table cloth.
Cushions :	Tempotest fabric cushions/beds for every settee and sunbathing area
Latest additions (2021/22):	Complete set of Wardrobes (towels, table cloths, bathrobes) with branded yacht name (MSY Margherita) New valuable Indian/Turkish rugs for every space New curtains in salon and front cabins New salon/galley fan New Pilot House sun protection sliding ceiling blind New Pilot House sun protection outdoor cover New front area awnings for sun shade arranged on stainless steel poles (removable)

## GALLEY

Refrigerator	3x Frigoboat holding plates 2001
Deep freezer	1x Frigoboat holding plate 2001
Icemaker	U-Line SP-18WH
Bread baking machine	Panasonic
Ice Cream machine	Simac Personal 1200
Microwave	yes, integrated
Stove	AEG Induction
Dish washer	Miele G619
Washing machine/ Dryer	Candy (new 2022)
Trash compactor	Swiftech

## DECK EQUIPMENT

Gangway	1x integrated in platform, 1x separate
Bathing platform	yes
Bathing ladder	yes, integrated in platform
Deck shower	yes
Anchor	1x Ultra Marine 176 Lbs. (80 Kg.) (new 2021), 1x CQR 105 Lbs (47 Kg.).
Windlass	Lofrans Falkon
Deck wash system	1x Fresh Water; 1x Sea Water
Fender covers	branded with yacht name and port of registration (new 2021)
Paint	Awlgrip in excellent condition

## TENDER

Tender	Avon 280 Classic with cover
Engine	Yamaha 5 HP (new 2021)

## SAFETY

Yacht surveillance	via Tele Observer video-system with bilge alarm connected, incl. 4 cameras with night vision, online system connected to the web (new 2021)
Life raft	1 x 8 persons, BFA
Life jackets	8 pieces automatic
Bilge alarm	yes, all bilges
Bilge pumps	yes, all bilges
Fire-extinguishing system	yes, automatic in engine room, phyrogen
Fire-extinguishers	yes, each cabin
EPIRB	McMurdo AIS/GPS G8 EPIRB
First Aid Kit	Full (Tab. A, D.M. 1/10/2015)
Oxygen Bottle	Yes (5 ltrs.)
AED	Yes (Philips HeartStart)









Sun pads



Aft cockpit



## Jongert 20DS MARGHERITA



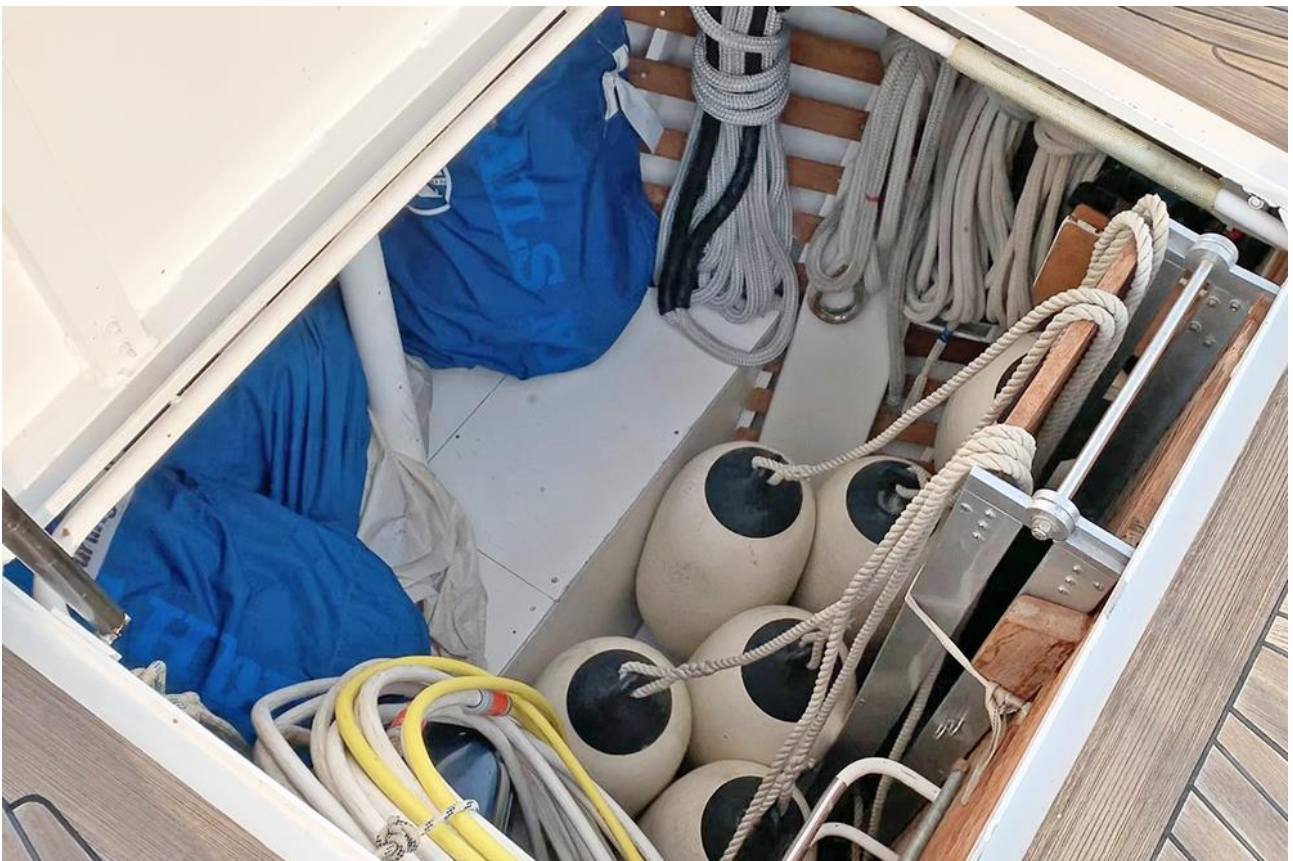








Foredeck















Deck saloon



Helm station





Lower saloon, looking aft



Lower saloon, looking forward





Galley (Stb side of saloon)







Master cabin



Master cabin





Master bathroom



Master bathroom





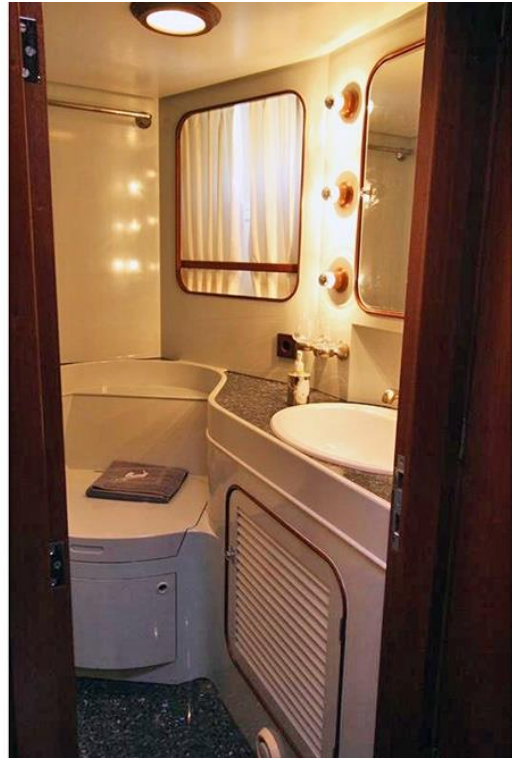
Shower/Bathtub in master bathroom



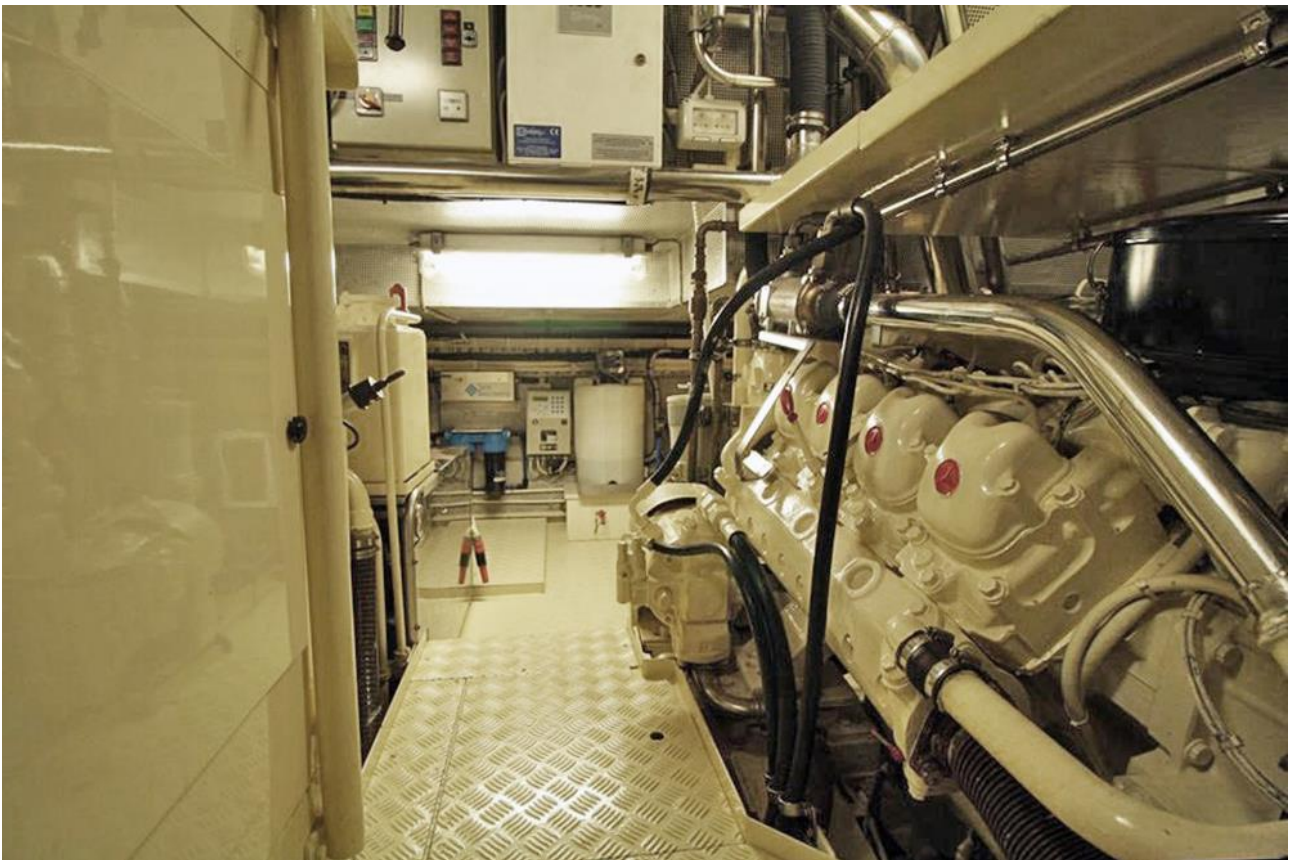
Guest cabin



Guest cabin



Guest bathroom

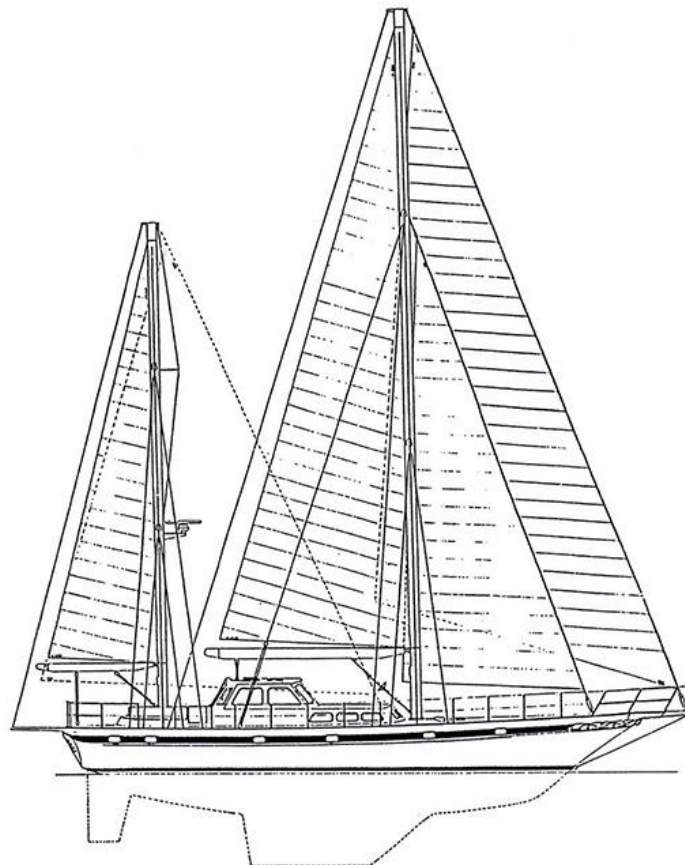


Engine

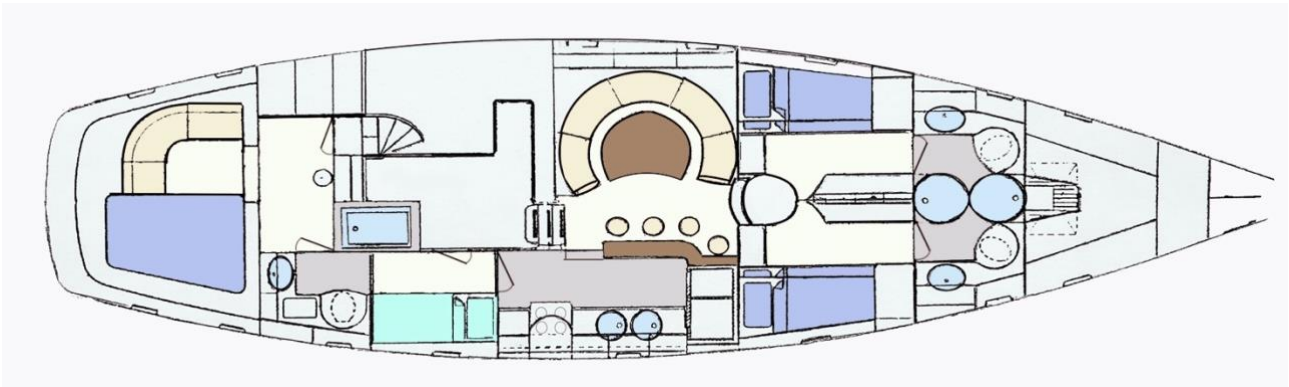




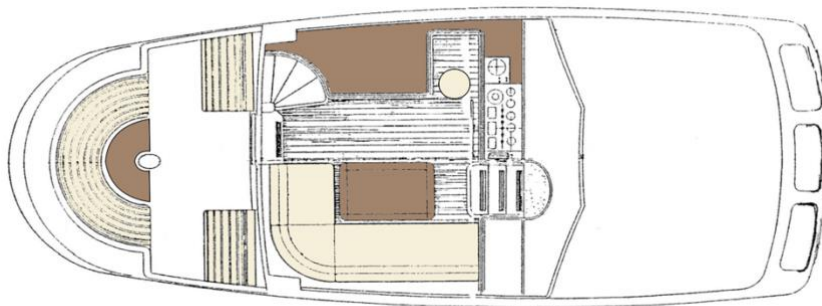
Engine room



Sailplan



Interior layout



Cockpit and deckhouse plan

Haas International offers the details of this vessel in good faith but cannot guarantee or warrant the accuracy of this information nor warrant the condition of the vessel. A buyer should instruct his agents, or his surveyors, to investigate such details as the buyer desires validated. This vessel is offered subject to prior sale, price change, or withdrawal without notice.