

## JONGERT 2700M ITHAKA



### Main Characteristics

<b>Model</b>	Jongert 2700M	<b>Hull material</b>	Aluminium
<b>Shipyard</b>	Jongert BV, Netherlands	<b>Superstructure</b>	Aluminium
<b>Naval Architect</b>	Doug Peterson	<b>Length O. A.</b>	27.30 m (89.57 ft)
<b>Int. Designer</b>	Jongert Design Team	<b>Length W. L.</b>	22.14 m (72.64 ft)
<b>Year</b>	2007	<b>Beam</b>	6.58 m (21.59 ft)
<b>Registry</b>	London UK	<b>Draft</b>	3.05 m (10 ft)
<b>Lying</b>	Palma de Mallorca, Spain (Berth optional available)	<b>Displacement</b>	78.5 tons at half load
<b>Price</b>	2'850'000 €	<b>Engine</b>	1x 257 Hp/189 kW Scania
<b>VAT Status</b>	VAT paid in Malta	<b>Accommodation</b>	6 guests in 3 cabins 3 crew in 2 cabins

## INTRODUCTION

---

ITHAKA is the 5th launch of the highly successful JONGERT 2700M series, crafted with expertise by the renowned Dutch Jongert Shipyard. She represents a coveted luxury sailing yacht, improving and advancing beyond her predecessors.

World famous yacht Architect Doug Peterson has redesigned the hull lines and the aft deck including the two outside steering stations and Van Oossanen naval architects have designed a special wing keel and an elliptic balance rudder ensuring heightened performance while sailing.

A 3m taller carbon mast with carbon boom and hydraulic in-boom furling was chosen to further improve performance. Bow- and stern thrusters are in place to guarantee effortless maneuvering.

ITHAKA's deck is a masterclass in design. Two unobstructed, panoramic steering positions offer a seamless sailing experience. A generously sized seating area ahead of the steering stations, complete with two cocktail tables, becomes an inviting setting for relaxation and entertainment.

The versatile deckhouse, which can be entirely closed in colder climates, adds to the luxury of ITHAKA. The adjustable windows on both sides offer the option of enjoying the natural breeze. A convertible table creates a lounge bed, promising comfort in any weather.

ITHAKA features some attractive technical details:

- Integrated in-boom furling with mainsail traveler and foresails furled on two hydraulic furlers providing a two-person crew the ability to operate the yacht effortlessly and securely.
- Optimized and strategically relocated standing rigging and foresail sheets running underdeck, offering a safe and unobstructed walk on deck.
- Dinghy safely stowed in recessed superstructure (multifunctional storage for tender / gennakers in regatta sailing or as kids' bath). It takes the two crew max 3 minutes to lower or stow the dinghy!
- Huge lazarette, with folding bathing platform, for all toys, diving gear, bicycles, fishing gear etc.
- Large aft platform for easy and secure access to dinghy or swimming.

Below deck, the interior is a sanctuary of tranquility. The "floating" interior design eliminates noise and vibration, enhancing the ambiance of serenity. This is further enhanced with water separators on main engine and generator exhausts for quiet operation.

A beautiful and modern pear wood was chosen to create a light and luxurious atmosphere.

The spacious lower salon offers a relaxation area and a generous dining space, catering to all your leisurely needs. The yacht's well-appointed galley and crew quarters are strategically placed ahead of the salon, ensuring seamless service. In the stern, the spacious and sophisticated owners' and guests' quarters provide utmost comfort. A large owner's stateroom and two twin guest cabins each have en-suite bathrooms, promising absolute privacy and luxury.

ITHAKA carries the hallmarks of a true Jongert – reliability, durability and safety, utmost comfort and luxury.

All technical systems, particularly in the engine room, have been thoughtfully installed for easy access and maintenance. As a testament to Dutch yacht craftsmanship, ITHAKA is the embodiment of maritime excellence, maintained meticulously by her dedicated crew. Enjoyed in private ownership and never chartered, she is in impeccable condition, ready to sail the moment you step aboard.

ITHAKA invites her next discerning family to embark on a journey around the world with unmatched comfort and performance.

### KEY FEATURES:

- **High pedigree yacht, superior quality of built**
- **Fantastic sailing performances, Jongert regatta winner**
- **Reliable yacht for world cruising, easy to sail by two**
- **Optimized and safe deck layout with free walk gangways**
- **Plenty of space on deck and high volumes inside**
- **Excellent condition**

**A word about Jongert:**

The Jongert Shipyard has been holding a significant place in the world of luxury yacht construction. Established in 1953 and family-operated, the shipyard has epitomized Dutch craftsmanship and innovation in this exclusive industry, boasting a legacy underscored by excellence of quality, innovation and seaworthiness.

**“Passion for perfection”:** Jongert’s slogan resonates throughout its history.

The brand is celebrated for its impeccable craftsmanship, with each yacht built with meticulous attention to detail and quality, using the finest materials available. Bolstered by a lineage of skilled artisans deeply committed to their craft, Jongert has ensured that every element of its yachts meets the most exacting standards.

**Innovation:** Renowned for its innovative approach to yacht design and technology, Jongert has continually pushed boundaries. By integrating cutting-edge materials, engineering techniques, and design principles, the shipyard has been producing yachts that seamlessly blend efficiency, seaworthiness and comfort. Thoughtful designs facilitate easy access to all systems, streamlining maintenance and repair processes.

**Semi-custom yachts:** A hallmark of Jongert yachts is their adaptability. For every new series introduced, each vessel has been tailored to the unique desires and specifications of its owner.

**Seaworthiness:** Jongert yachts are esteemed for their exceptional seaworthiness. Engineered to effortlessly navigate the world's oceans, these vessels offer stability, comfort and safety even in the most demanding conditions. Whether cruising leisurely or embarking on transoceanic voyages, Jongert yachts deliver a dependable and gratifying experience. Some have crossed the Atlantic more than 45 times, a testament to their enduring reliability.

**Resale Value:** Thanks to their sterling reputation, Jongert yachts maintain their value admirably over time. Their fusion of luxury, smart layout and systems, robust safety features, and superlative craftsmanship distinguishes them in the world of yacht construction, rendering them highly coveted among discerning clientele.

## GENERAL SPECIFICATION

LOA.:	27.30 m	Displacement:	75 tons (50% load)
Length hull:	26.70 m	Net Register tonnage:	83 tons
LOD:	25.24m	Gross tonnage:	24 tons
LWL:	22.14 m	Fuel:	5'000 Litres
Beam:	6.58 m	Fresh water:	3'000 Litres
Draft (min):	3.05 m	Grey/Black water:	500 Litres
Air draft (max):	38.50 m		

## CLASSIFICATION

Hull certificate Lloyd's 100A1, SSC, YACHT, G6 JONGERT

## CONSTRUCTION

### BUILDER

Hull: Jongert – The Netherlands.  
 Interior: Jongert – The Netherlands.  
 Installations: Jongert – The Netherlands  
 Building NR 424 Builders identification plate nearby engine room.

### ARCHITECT

Construction: Doug Peterson, naval architect.  
 Keel + rudder: Van Oossanen – The Netherlands  
 Exterior design: Jongert Design Team  
 Interior design: Jongert / Jernberg & Ageet Gotink - NL

### HULL

Medium displacement round bilged, negative stern construction, with integrated bath platform, raked bow and special performance designed wing keel and elliptical balance/spade rudder by Van Oossanen hydro specialist naval architects offer 'high aspect' sailing.  
 Built in ALmG 4.5 Mn 8- and 6-mm aluminium.  
 Hull construction (below waterline) bow to engine room extra transverse framing each 50cm.  
 Under crew accommodation + forepeak extra longitudinal stiffeners.  
 Aftship frames each 100 cm + longitudinal stiffeners each 50cm under lazarette and owner's cabin.  
  
 5 watertight compartments by 4 bulkheads, of which 1 has watertight (engine room entrance) doors.  
 One 6 mm aluminium balance/spade rudder. Performance design.

### DECK

Main deck covered with ± 15 mm teak in a bedding compound.

### SUPERSTRUCTURE

Built in ALmG 4.5 Mn 5 mm aluminium.

<b>RIGGING</b>	<p>Both mast and boom are in carbon fiber.</p> <p>Nirvana boom and hydraulic boom furling system</p> <p>Hall Spar mast 38.5m</p> <p>In 01/2021 the mast was un-stepped; all standing rigging was renewed except backstay that was checked and re-headed.</p> <p>In 02/2021 the mast was re-stepped, checked &amp; serviced and tuned.</p>
<b>OTHERS</b>	<p>Nirvana Spars flushdeck aluminium hatches in fore deck, owner's cabin (teak finished/escape) and lazarette (teak finished).</p> <p>Nirvana Spars aluminium hatches, flushdeck in salon, galley and dinette with blinds and integrated Ocean air insect screens.</p> <p>Deckhouse hatches (opposite opening for optimal fresh air+ blinds)</p> <p>Stainless steel fittings and hardware, hand and sea railings (90 cm), with bow- and stern pulpit, fairleads /bollards (including flushdeck models) mooring lines protection strips, bow protection / intractable anchor bow launch and storage system.</p> <p>Deck locker (seats/hatches) with air cylinder hatch levers.</p>
<b>WINDOWS</b>	<p>15 mm sun tinted, laminated double, hard glass windows of which the aft deck house windows can be lowered electr. /Hydr. fitted in the aluminium construction.</p> <p>3 Prisma model deck build in deck lights</p> <p>3 heavy-duty wind shield wipers with interval and freshwater wash</p>
<b>PORTHOLES</b>	<p>Of 15 mm hard glass. Throughout accommodation including salon/dining. All with blinds.</p> <p>3x opening models in owners' cabin and owner's bathroom with insect screens and storm shutters.</p> <p>4 Lewmar opening portholes of which 2 below each cockpit bench and 2 below each wheelhouse bench + insect screens.</p>
<b>PAINT SYSTEM</b>	<p>Superstructure painted 2016 in Awlgrip high gloss, colour off white</p> <p>Hull painted in 2016 in Awlgrip high gloss Colour Colour Majestic blue</p> <p>Mast and boom painted in 2016 in Awlgrip high gloss, colour off white</p> <p>Underwater hull antifouling painted January 2021. System International Trilux-self polishing. Colour black.</p>
<b>INSULATION</b>	<p><u>Thermal</u>: Hull down to waterline and Superstructure insulated by foam.</p> <p>Hull inside applied with anti-condensation and -noise layer and paint.</p> <p><u>Acoustic</u>: Noise &amp; vibrations reductions following Jongert standards. Hull inside at various places amongst above the propshaft treated with noise &amp; vibrations reducing applications. Complete interior joinery flexible mounted. The floors are installed on 'Silomer' silencing. Engine room anti-noise insulation down to waterline, perforated aluminium sheeting. 'Bondal' (alu/lead/alu) insulation between Engine room ceiling and salon floor.</p> <p>Installations in engine room where required installed on rubber mounts.</p> <p>Noxudol insulation material in area above propeller.</p> <p>Water separators on main engine and generators further reduce the noise level inside and especially outside of the yacht.</p>

## MACHINERY & PROPULSION

### MAIN ENGINE

Single Scania D/9 93M IFCN 6 cylinders diesel engine, built 2007.

Continuous rating  $\pm$  257 Hp (189 kW) at 1900 rpm.

Engine hours app. 6000h in 05/24.

Engine with turbo charger, inter cooling system with water injected insulated GRP silencer and water-exhaust gas separator. Hydro pto.

Raw water intake manifold with dual exchangeable filters. One handle seacock.

Piping in aluminium steel, ABS and PVC.

#### Service:

In 05/2017 heat exchanger for main engine was taken off, serviced, pressure checked and reinstalled. Sea water pump taken off, serviced and reinstalled.

In 03/2019 heat exchanger for main engine was taken off, serviced, pressure checked and reinstalled. Sea water pump taken off, serviced and reinstalled.

In 02/2020 raw water pump taken off, serviced incl. mechanical seal replacement and reinstalled.

In 01/2021 raw water pump taken o, serviced and reinstalled. 2x Alternators were taken off, serviced (new bearings and brushes) and reinstalled.

Normal oil changes every 250hrs on main engine.

In 04/2023 Main engine service by Waterline Palma de Mallorca:

Interchange service, ultrasonic cleaning, changed O-rings and gasket. Oil cooler serviced, Ultrasonic cleaning, changed O-rings and pressure tested in shop. Replaced turbo, cooling pump, coolant, thermostats, oil including all ail filters and fuel filters. Full service on salt water pump including seals, bearings cover and gaskets.

Injectors serviced, injector washers renewed and checked pressure.

Tube from expansion tank to cooling pump renewed.

Separate (environment friendly) bilge under main engine.

1 x 24V 120 Amp Alternator for service batteries.

1 x 24V 55 Amp Alternator for start batteries.

Separate external oil cooler, 3 x in line for main engine, gearbox, hydraulic oil.

Arrangements are made in the yacht's construction to lift the entire main engine and generator through the superstructure rooftop.

### MONITORING

By analogue meters engine room.

By integrated computer system with touch screens (large dual Mermaid screens in wheelhouse and Exter 70 screens in wheelhouse, messroom, captain cabin and at each extern steering station), including full main engine control, tankage levels, bilge alarms, automatic stop/ water oil/overload alarm, burglary alarm etc. and automatic alert to home base (I-phone). See Management System.

Start and stop + acoustic alarms at in- and SB outside steering station with emergency start + stop + control in engine room.

Exhaust temp. meter main engine.

### CONTROL SYSTEM

Twin Disc (SSE) electronic control system in wheelhouse and SB outside steering.

**GENERATORS****1 x 27 kW / 36 hp** (at 1'500 rpm)

Gen. hours app. 7'200hrs in 05/24.

Kohler generator in sound shield box.

Exhaust with Aqualift silencer and separator + hydro pto.

1 x 24V 55 Amp Alternator for start batteries.

Consumption 8/9 l/hr

**Service:**

In 03/2019 the injectors taken out, serviced & nozzles replaced and reinstalled.

Heat exchanger taken out, serviced and reinstalled. Coolant replaced. Raw water pump serviced including yearly change of anodes.

In 02/2020 all sensors and electric panel replaced. Old panel read 5'800hrs, new panel reads now 1'400hrs. Fuel injection pump taken out, sent to manufacturer for service and reinstalled. Heat exchanger taken out, serviced, tested and reinstalled. Raw water pump taken out, serviced and reinstalled. Fan belts replaced and two new spare belts installed. Coupling for PTO replaced. Stop solenoid replaced.

In 01/2021 raw water pump taken out, serviced and reinstalled. Heat exchanger replaced. New air filters, new starter motor.

In 04/23 general service by Waterline Palma de Mallorca including:

Oil, oil filter, fuel filter and racor filter changed, raw water pump replaced including belt and Zinc anodes. Output power checked.

**1 x 11.5 kW / 15.4 hp** (at 1500 rpm)

Gen. hours app. 5'800 hrs in 05/24.

Kohler generator in sound shield box.

Exhaust with Aqualift silencer and separator.

Consumption 4/5 L/hr

**Service:**

In 03/2019 raw water pump taken off, serviced and reinstalled. Fan belts replaced, injectors taken out and serviced.

In 03/2020 installed new raw water pump, general service

In 04/2023 general service by Waterline Palma de Mallorca including:

Oil, oil filter, fuel filter, racor filter, sea water pump, belt coolant pump, thermostats, rubber tubes, drain valve crank shaft seal belt changed. Output power checked.

Start and stop controls in wheelhouse, engine room, lazarette.

Automatic stop when water / oil/ overload alarm, both generators.

At low level alarm of service batteries by system notification to crew phone, main generator can be distance started through communication PC.

**GEARBOX**

Twin Disc hydraulic gearbox with flexible coupling.

**Service:**

05/2017 heat exchanger was taken off, checked & cleaned, pressure checked and re-installed.

03/2019 heat exchanger was taken off, checked & cleaned, pressure checked and re-installed.

01/2019 gearbox was taken out, all moving parts were completely renewed and gearbox re-installed.

Trolling valve system for maneuvering at very low speed.

In 04/2023 oil and Zincs changed.



<b>BOW THRUSTER</b>	<p>The bow- and stern-thruster can be used via two different systems:</p> <ol style="list-style-type: none"> <li>1. from PTO on main engine (engine's rpm is raised from 700 to 900rpm)</li> <li>2. from PTO on generator</li> </ol>
<b>PROP SHAFT</b>	<p>Hydromar water type propeller shaft.  70 mm diam. steel/ stainless steel type 316 shaft.  Automatic shaft greasing system. Water and Oil bath.  3 blade J-Prop bronze 900 mm diam. Mechanical variable pitch / vane model propeller.</p> <p><b>Service:</b>  In 02/2019 Propeller shaft was taken out and checked, the cutlass bearing replaced on P-bracket and on shaft.  The propeller bearings and lip seals replaced and reinstalled as well as the oil changed in the system.</p>

## TANKAGE

<b>Fuel:</b>	<p>2 x 1'900 liters aluminium wing tanks with inspection manholes and cross over pipe + valve.  Tanks amidships in engine room, opened, inspected &amp; cleaned in 2018  Day tank of 1'050 liters, opened, inspected &amp; cleaned in 2018  Electronic capacity meter by monitoring system + dipstick.</p>
<b>Fresh water:</b>	<p>2 x 1'500 liters aluminium double bottom tanks with inspection manholes/ and cross over pipe + valve electronic capacity meter by monitoring system.  Tanks are installed aft amidships to enable most ideal ships trim. Tanks inner site painted in epoxy Intergard.</p>
<b>Grey/Black water:</b>	<p>1 x 750 liters aluminium double bottom tank with inspection manhole. Electric level alarm.  Tank is installed forward amidships under galley for ideal ships trim. Vent by mast at 5 m. above deck + salt water shower tank cleaning system. In 2011 tank sandblasted + new inner coating. Each year emptied, opened and cleaned by professional company each year.</p>
<b>Lubrication oil:</b>	<p>Aluminium double bottom wing tank on SB. Manual pump filling of Main engine + gearbox and main generator.</p>
<b>Waste oil:</b>	<p>Aluminium double bottom wing tank on Port. Waste oil pump to discharge oil of main engine, gearbox and generator to tank or Ship-shore for Main engine, gearbox and main generator.</p>
<b>Filling / emptying:</b>	<p>Deck integrated provisions in SB and Port deck. Fuel/Water/Waste water/BB-deckwash/SB freshwater.</p>

## PERFORMANCE

<b>Under sail:</b>	<p>Cruising speed: 8/9 knots at 13/14 knots windspeed  Max speed: 12/13 knots average</p>
<b>Under power:</b>	<p>Max. speed: 10 knots @ 2500 rpm  Cruising speed: 8 knots @ 1500 rpm  Range: at cruising speed 2100 Nm  Consumption: at 8 knots / 1500 rpm - 17 l/hr</p>



## AUXILIARY EQUIPMENT

<b>AIR-CONDITIONING/ HEATING</b>	<p>Climma, capacity 83.000 BTU</p> <p>Two compressor reverse cycle system containing: Hot/ Cold water circulation system with individual Climma Vega MKII digital thermostat-controlled accommodation fan coils. Hot water circulation by boiler.</p> <p>System calculated that at an outside temp of + 37° C an inside temp. of + 22° C can be achieved, at seawater temp. of + 28° C.</p> <p><b>Service:</b></p> <p>General Service every year: Check pressure flushing both compressors. Change anodes and check glycol level.</p> <p>3x Air coil units taken out and serviced incl. change of bearings and re-installed</p> <p>In 03/2013 cleaning of Marine condensers, descaling and neutralizing. Change of 4 Zinc anodes</p> <p>Check state of antifreeze liquid in loop system and top to right consistency.</p>
<b>HYDR. POWER PACK</b>	<p>Make Hydromar, installed in the engine room for bow- and stern thruster, anchor winch, sail winches, sail furls and driven by pto hydro pumps installed on the main engine and main generator and by electric pumps over service battery group (without engine/generator for silent sail mode). Alarm system/Emergency stop (3x in wheelhouse/+ each outside steering station)</p> <p><b>Service:</b></p> <p>In 01/2021 change of all filters and oil in system</p>
<b>BOWTHRUSTER</b>	<p>Hydromar HBT-DP-35, 47 Hp/35 kW</p> <p>Hydraulic folding / retractable by cockpit proportional control</p>
<b>STERNTHRUSTER</b>	<p>Hydromar HBT-DP-20, 27 Hp/20kW.</p> <p>Hydraulic folding/retractable by cockpit proportional control.</p>
<b>STEERING GEAR</b>	<p>Lewmar (Whitlock) mechanical/electric system with 2 carbon wheels finished with soft white leather.</p> <p>Emergency tiller.</p>
<b>DIVING GEAR</b>	<p>2x emergency Pony bottles</p>
<b>VENTILATION</b>	<p>Engine room: Bosa heavy duty mechanical ventilation system with manual fire shutters from wheelhouse steering station.</p> <p>Accommodation: Mechanical + natural air ventilation throughout the yacht + by air-conditioning fan coils.</p>

## SYSTEMS

<b>FUEL SYSTEM</b>	<p>Double Racor type fuel filters for main engine and generator.</p> <p>Double Racor 75/900 fuel separator filters for main engine and double Racor 75/600 fuel separator filter for generator.</p> <p>Fuel-Mac bacterial filter before Racor filters.</p> <p><b>Service:</b></p> <p>All filters changed in regular intervals.</p>
<b>WATER SYSTEM</b>	<p>Fresh water; Viscomat 70/90, 24V hydrophore. 50 litres pressure tank with Sihi AOHA 1102 electric pump.</p> <p>System with HEM UV sterilization and carbon filter aft hydrophore.</p> <p>Hotwater system by 120 liters Daaldrop Mono 3 calorifier, electric heating system.</p> <p>Ship-shore fresh water connection + 2x filter in lazarette Hot/Cold water shower at bathing platform.</p> <p>Watermaker; HEM 25-1200 capacity 225 l/h - 5400 l/day (approx. 2'300 hours 10/2021)</p> <p><b>Service:</b></p> <p>UV-bulbs changed every year, filters regularly changed.</p> <p>In 08/2018 membranes replaced and high-pressure pump taken out, serviced and re-installed.</p> <p>In 02/2021 raw water pump taken out, serviced and re-installed.</p> <p>In 11/2020 high pressure pump taken off, valves replaced and normal service with filters etc.</p> <p>In 02/2023 High pressure pump removed and serviced including valve replacement with C-317 valve kit, seals replaced with C317 seal kit, belt and oil changed.</p> <p>Removed 3 membranes, check working salinity and replaced seals and end caps.</p> <p>UV-Bulb and cylinder in the water purification system changed.</p>
<b>SEWAGE SYSTEM</b>	<p>Grey/Black water; Hamann Super Mini L frame, treatment system. In approximately 30 minutes the 500 Ltr. tank content is treated and environmentally friendly emptied.</p> <p>Sealand heavy duty electr. 10 min direct overboard discharge pump or ship-shore by discharge connection in SB deck. Waterflush 2003 vacuum/electric fresh water flush toilets.</p> <p>Discharge bathrooms and galley by 3 x 24V Rheinstrom 3509 shower sump pumps systems.</p> <p><b>Service:</b></p> <p>In 3/2023 complete service of Hamann system by Precision Marine in their workshop including: Service of Macerator pump, mechanical seal replacement, O-ring replacement, bearing replacement, rubber stator replacement, service chlorine mechanism and renewal of chlorine. Tank level indicator removed for tank and checked. Electricals, timer and breakers checked. Rotor, gear box body, rubber joints and clamps replaced and re-installed on board.</p>
<b>BILGE SYSTEM</b>	<p>One Sterling Fluid 400V electric heavy-duty bilge pump, manual and electrical controlled by monitoring screen in wheelhouse and crew messroom. Alarm panel in captain cabin. One Steimel heavy-duty pump driven by main engine. Manifold for bilge compartments, direct overboard/ grey water tank discharge/ exchangeable by-pass back-up system with deckwash/ firefighting pump.</p>
<b>DECKWASH SYSTEM</b>	<p>Freshwater tap point at SB deck filling station. Deck wash hose.</p>
<b>FIRE FIGHTING SYSTEM</b>	<p>1 x salt water tap at Port deck filling station.</p>

## ELECTRICAL SYSTEM

Professional electrical installation built by Doctrionics (Multibridge) and Jongert.

Monitoring of electrical system by touch screens at doghouse steering, outside steering and messroom. AC and DC main switch panels including automatic circuit-breakers and control lamps in engine room. Earth failure alarm on monitoring screens.

Voltage/ Ampere/ meters and low voltage alarm, charge and discharge display by PC management system.

230V + 1 x 24V recepticals. Automatic shore/generator supply take over.

One generator running for approx. 4 hr is sufficient for 24 hr of electric power and silent ship condition in easy /sail mode.

11.5 Kw (silent) generator suits for when under sail or in anchor mode incl. airco / fridges, cooking.

Automatic generator activation by energy management system.

**VOLTAGE** 24V DC. 230/400V-50Hz AC.

**BATTERIES** Start set main engine: 2 x 12V in series traction closed maintenance free batteries of 280 Ah. Seaworthy stowed in boxes in engine room. In 04/2023 main engine start batteries renewed.

Start set 27Kw generator: 2 x 12V traction closed maintenance free batteries new in 04/2023. Seaworthy stowed in boxes in/engine room.

Start set 11.5Kw generator: 1 x 12V traction closed maintenance free battery Year 2012 Seaworthy stowed in boxes in lazarette. Replaced 10/2020

Service set: 1 x 24V, consisting of 24 x 2V traction closed maintenance free Mastervolt batteries of totally 1500 Ah. Seaworthy stowed in boxes under owner's cabin. All service batteries replaced in 2017.

Other (maintenance free) batteries;

2 x 12V/24V Monitor set

2 x 12V/24V Hydropack

1 x 12V Alarm

1 x 12V VHF emergency

Emergency/ batteries By-pass/ switch for starting generator and main engine.

**GENERATORS** 1 x 27 kW (at 1500 rpm) Köhler generator in sound shield box in engine room.

1 x 11.5 kW (at 1500 rpm) Köhler (2009) generator in sound shield box in lazarette.

**CHARGERS** 3 x 24V- 100Amp Victory Energy Mass 24/100 automatic chargers for service battery bank.

1 x 24V – 15 Amp Mastervolt for 27Kw generator and main engine batteries.

1 x 12V – 10 Amp Mastervolt for 11,5Kw generator battery, renewed in 3/2023.

Main engine alternator 24V/ 55 Amp and extra of 24V/110 Amp for start battery and service bank.

Provisions to run one charger at 60Hz. (USA)

**INVERTERS** 2 x 24V - 230V – of 5000 Watt each. Victory Energy for galley/ salon/ wheelhouse plugs/ and emergency lighting and modest consumption for cruising mode when under sail / silent ship.

**SHORE POWER** Shore power intake 400V (3-phase through automatic relay) in lazarette complete with cable. Wezeman 18.6 kW / 50Hz ship shore transformer/splitter in aft peak. Ship shore cable of 30m with waterproof plug.

**LIGHTING** Interior lights 24V including led dim spots, indirect cove and flood lighting, lighting, courtesy red night lights in deck house and white step lights. TL-lamps 24V in engine room. Deck lights 24V halogen spots in spreaders and boom and hidden indirect teak caprail built in gentle glow (glassfibre/halogen) flood deck lights. + integrated lights in passarelle. Mast spreader sail-up led lights.

## SAILPLAN / RIG

**SAILPLAN** Masthead cutter rigged sloop.

**MAST and BOOM** Hall Spars carbon fiber main mast with 4 spreaders. Mast keel stepped. Spreader deck and up-sail lights. Nirvana Spars, carbon fiber mainsail in-boom furling. painted in color white, with integrated led lights.

**STANDING RIGGING** Stainless steel rodrigging Ø 25mm - Ø 7.5mm with stainless steel turnbuckles. Surveyed and replaced where required 2012. Furling systems for Mainsail, Staysail, Genoa. Hydromar stainless steel hydraulic backstay tensioner and boomvang. Hydraulic halyard tensioners, for genoa and staysail.

## RUNNING RIGGING

### Halyards

Mainsail: Dyneema Ø 18 mm white  
Genoa: Vectran Ø 18 mm yellow  
Staysail: Vectran Ø 16 mm yellow  
MPS: 2x Titan Ø 14 mm grey, port  
MPS halyard replaced 2019  
Boom topping lift: Dyneema Ø 14 mm white  
Boom preventer: Dyneema Ø 14 mm white

### Sheets

Mainsail: Helios T Ø 18 mm dark grey  
Genoa: Helios T Ø 18 mm dark grey  
Staysail: Helios T Ø 16 mm dark grey  
MPS: Dyn. SK78 Ø 18 mm red/green  
MPS tackline: Gemini Ø 18 mm white  
Runners: Helios T Ø 16/18 mm, Dyneema SK 78 T Ø 14 mm

Sheets and halyards cockpit, aft deck and mast controlled.  
Genoa and Staysail sheets go underneath decks to aft deck winches.

**BLOCKS** Modern make Harken. Ball bearing.

**FITTINGS & HARDWARE** Stainless steel / Aluminium fittings and hardware / rope jammers. Most make Harken.

**DECK GEAR** Aluminium/Stainless-steel make Harken.  
Deck integrated traveler for mainsail.

<b>SAIL WINCHES</b>	Make Harken.
<b><u>Halyards:</u></b>	1 x Hydromar captive hydraulic for mainsail 2 x Harken 990 STAD, 2 speed / Port = hydr. / SB= manual in combination for halyards and others. 2 x hydraulic halyard tensioners mounted at each side mast.
<b><u>Sheets:</u></b>	2 x Lewmar 1110.3 STADHY hydr/push button, 3 speed. 2 x Lewmar 990 STADHY hydr/push button, 3 speed. Extra low/highspeed function. Antal make deck push buttons with prevention lid. 1 x Hydromar captive hydraulic for main sail. All winches yearly serviced and sacrificial parts renewed. 2 x Lewmar 10" winch handles with double grip. 2 x Lewmar 10" winch handles with single grip.
<b>FURLING SAILS</b>	for Mainsail: Nirvana Spars boom-in furling hydraulic by joy stick for Genoa: Reckmann RF 90-5 hydraulic push button control for Stay sail: Reckmann RF 90-4 hydraulic push button control both with manual back-up.
<b>SAILS</b>	1x Main Sail Laminated - North Sails 3DL – 189 m <sup>2</sup> 1x Genoa Spectra/dyn - North Sails Tri-Rad (Spector Gatorback) 212 m <sup>2</sup>
<b>DECK EQUIPMENT</b>	
<b>ANCHOR WINCH</b>	1 x Single Hydromar HVW 6000 hydraulic vertical capstan model with stainless steel chain stopper, chain tensioner, chain counter. Controlled by remote control and deck built-in push button.
<b>Service:</b>	In 01/2021 anchor winch taken out and serviced. Seals replaced and reinstalled. In 11/2021 hydraulic motor is replaced with new one. One 80 KG galvanized steel anchor, type Bruce, seaworthy stowed in retractable bow-shell pocket with anchor roller. One Fortress FX-125 spare anchor. 110 m galvanized anchor chain of 13 mm, new galvanized + anchor 2012. Chain stowed in separate GRP chain locker. Spare Danforth aluminium anchor + nylon anchor line of 100 m/ 30 mm / with 10 m chain, stowed in lazarette.
<b>CAPSTANS</b>	Vertical on anchor winch. Remote control. For aft deck see sail winches. Deck push buttons
<b>TENDER CRANE</b>	By halyard.
<b>COVERS &amp; CUSHIONS</b>	
Sunawning	Canvas, over main boom colour crème. Aft end deckhouse.
Bimini	Over outside steering with stainless steel frame.
Tarpaulins	For tender / winches / wheels / outer steering stations.
Sailcover	For main sail.
Pockets	In cockpit for sheets.
Cushions	For outside sofa seats, deckhouse sofa seats and lounge, changed in 2015

<b>OTHERS</b>	Fenders: 11 x various models Mooring lines: various as present
---------------	---

## NAVIGATION EQUIPMENT

---

<b>NAVIGATION LIGHTS</b>	Certified led type as per international rules. Red over green mast head lights. Steam light and Masthead red light (bulbs). Up lights in mast spreader for lighting sails.
<b>COMPASS</b>	B&G Precision 9 gyro compass with repeaters at steering stations, messroom, pilot-house and interfaced to GPS autopilot, radar and chart plotter. 1 x handheld liquid compass
<b>LOG</b>	Electronic make B&G type Hydra 2000 and 2 x repeater. Log read out by GPS and chart plotter
<b>DEPTH SOUNDER</b>	Electronic Furuno GP 7000 F multifunctional unit (plotter + GPS) Color video sounder/fish-finder
<b>WINDMETERS</b>	Electronic B&G Hydra 2000 indicating wind-speed and wind-direction / wind-angle / clause hold. Digital display including air temp. Conventional 'Windex' wind direction.
<b>NAVTEX</b>	Furuno NX-300 nautical message receiver.
<b>RADAR</b>	Furuno FAR 2117 black box with 4 ft antenna and 15" Mermaid color display in pilot-house and Seabook M12 radar display at SB outside steering station. Range 115nm daylight or color preference set-up. Arpa system integrated in radar and chart plotter.
<b>CHARTPLOTTER</b>	Max-Sea Chart plotter T 2 with 15" display in pilot-house interfaced to GPS / AIS / Radar, new in 2/2021. Map cartridges for Mediterranean + see Furuno GP 7000 F
<b>POSITIONING</b>	GPS Furuno Navigator GP 107 (Depth sounder + plotter) + 2x Handheld GPS.
<b>AIS</b>	Furuno FA-150 Automatic Identification (and location) System of vessels position and track. Linked to Radar/ chart plotter
<b>AUTO PILOT</b>	Segatron in pilothouse with repeater at PS outside steering + off-course alarm. Joystick control in pilot-house.
<b>WIND STEERING SYSTEM</b>	by B&G Hydra 2000 windvane.
<b>RUDDER INDICATOR</b>	B&G.
<b>SEARCHLIGHT</b>	24V handheld electric
<b>HORN</b>	Air compressor type

**MANAGEMENT SYSTEM** Multibridge with touch screens at port navigation desk pilothouse, SB and PORT outside steering stations, messroom (with iPod plug in) and captain cabin.  
Yacht management system offers amongst: monitoring and control of / navigation lights / main generator controls/ start-stop /alarms/ bilge / tank level / electrical / /earth failure/ systems, passarelle and others.  
Failure alert system to shore base and diverse functionality by log-in from shore base.

**SEA CHARTS** Admiralty paper charts of Mediterranean / Caribbean / Croatia and Italy.

**NAUTICAL BOOKS** Pilot books included.

**OTHERS** Barometer/ Barograph/ Clock  
Water temp and inclination by Hydra 2000.

## COMMUNICATION

---

**VHF** Sailor S.P. Radio RT-5022 with GMDSS distress button + repeater at SB outside steering station. 2 x Handheld make Icom (floating and waterproof)

**COMPUTER /  
COMMUNICATION** 1 x Nexcom, new in 2/2021 with Windows 10, connected via IP-Address to:  
Pepwave Wifi-Router on board with 2x SIM Slots, connected to ANT (B & G Processor), to Intellan-TV Dome, Monitoring System and hydraulic System.

**BOARD TELEPHONE** System with telephones in each cabin + 3 x wireless.

**TELEVISION RECEIVER** Intellian T 9 global TV receiver and decoder.



## ACCOMMODATION & LAYOUT

<b>DECK</b>	<p>The flush deck hatches optimize safety and comfort on deck and maximize sundeck facilities, while the efficient and logic deck gear requires a minimum of crew for sail handling.</p> <p>Sea railing with 90 cm high stainless-steel stanchions with 2 wires to ensure maximum safety.</p> <p>Teak unvarnished caprail with design integrated deck lights.</p>
<b>OUTSIDE STEERING STATIONS</b>	<p>Dual stations with each yacht's control panel. Professional instruments set-up for easy readability. Luxury helmsman seats and bimini.</p>
<b>OUTSIDE SEATING AREA</b>	<p>Twin large L-shaped sofa seats in teak with side tables.</p> <p>2x tables, cushions, removable sun awning over boom, speakers</p>
<b>DECKHOUSE</b>	<p>Spacious semi open relax, observation or sheltered dining area with electr. /Hydr. opening lowerable windows. Perfect 360° view.</p> <p>Deck-house entrance comfort hatch. Headroom ± 195 cm.</p> <p>Most comfortable and multifunctional area with two large U-shaped lockers integrated sofa seats and large teak grating tables. SB table electr. lowerable and convertible into king size lounge bed.</p> <p>Canvas + windows windshield aft of deck-house.</p> <p>2x tables teak grating, with smart fixing system, cushions, speakers</p> <p>In 1/2023: hydraulic system for deckhouse opening was completely serviced including: Removal and service of triple hydraulic valve block, pressure testing, painting and re-Installation. Reset of pressure settings.</p>
<b>INSIDE NAV. STATIONS</b>	<p>Forward in semi enclosed deck salon. 2 x navigation desk/ helmsman seat.</p> <p>Professional instruments and monitoring set-up for easy readability and yacht's control.</p> <p>Locker space for manuals/ sea-charts + others incl. safety.</p> <p>Flash lights, binoculars, link to Bose audio system, iPod plug-in</p>
<b>INTERIOR LAYOUT</b>	<p>Although this yacht has never been chartered, her lay-out would be ideal.</p> <p>Most spacious and luxurious accommodation for 2 owners and 4 guests in 3 cabins</p> <p>Comfortable crew quarters. The set-up with crew quarters forward and efficient galley location and separation offers a maximum of privacy for owners and guests.</p> <p>Ventilation/escape hatches and portholes throughout accommodation with integrated 'ocean air' insect screens/blinds.</p>
<b>INTERIOR MATERIALS</b>	<p>The interior is excellently built-in pear wood with titanium finishing touch by Jongert in the renown Dutch contemporary/modern style and tonneau shape. The woodwork is satin varnished.</p> <p>Teak deck in deck-house.</p> <p>Carpets in salon, cabins and aft corridor.</p> <p>Stainless steel fittings and hardware.</p> <p>Corian worktops and sinks in bathrooms.</p> <p>Grohe luxury chromium plated taps.</p> <p>Mattresses (Neptune) on slatted berths bases.</p> <p>Blinds (luxaflex type) in salon/dining/cabins and integrated blinds in hatches.</p>

<b>LOWER SALON</b>	<p>The wide stairway and integrated teak sliding door give access from the deckhouse to the lower salon.</p> <p>Comfortable and luxury stylish set up. Full headroom up to 200 cm.</p> <p><u>Starboard side:</u> salon area with comfortable L-shape sofa of fine white fabrics.</p> <p>Salon table with integrated electr. lifting mini bar. Cupboards for glass and china + plenty of further lockers space incl. cassettes for cutlery.</p> <p><u>Portside:</u> comfortable U-shaped dining sofa, offering formal dining area for 6 up to 8 people. Separate teak chairs.</p> <p>Glasswork (Schott – Zwiesel), China (Itala), cutlery in cassettes, built-in Sharp TV + Topfield Decoder TF4000PVR, HiFi/cinema sound system Bose + CD + iPod plug-in - multifunctional/user system for all accommodations + deck by own remote wireless control, Pioneer DVD DV-393/Dolby system, Internet wifi.</p>
<b>OWNER CABIN</b>	<p>Cabin with headroom up to 195 cm.</p> <p>King-size berth of 200 cm length. Mattress inclination adjustable.</p> <p>Lockers, drawers, wardrobes, dressing table, sofa seat. Carpet and hatches give access under the floor.</p> <p>Spacious and luxury en-suite bathroom with electric fresh water flush toilet, bidet and a separate shower. Epoxy bathroom floor and walls.</p> <p>Built-in Sharp TV, link to Bose audio system, iPod plug-in, Pioneer DVD, internet wifi</p>
<b>GUESTS CABINS</b>	<p>Two spacious cabins for 4 guests with headroom up to 195 cm.</p> <p>Each with twin berths of 200 cm length.</p> <p>Lockers, drawers. Carpet and hatches give access under the floor.</p> <p>En-suite bathrooms with separate shower and electric fresh water flush toilet. Epoxy bathroom floor and walls.</p> <p>Link to Bose audio system, Internet wifi</p>
<b>CREW CABINS</b>	<p>Two cabins, offering berths for a total of 3 crew.</p> <p>Both cabins with headroom up to 195 cm.</p> <p>1 x single berth, 1 x 2 bunk berths (of which the lower berth can be extended into two persons berth). Berths of 200 cm length</p> <p>Separate combined bathroom with shower and electric fresh water flush toilet.</p> <p>Link to Bose audio system, iPod plug-in, internet wifi</p>
<b>MESS ROOM</b>	<p>Mess room opposite to the galley. Full headroom up to 200 cm</p> <p>Separate entrance possibility by deck hatch.</p> <p>Link to Bose audio system, iPod plug-in, internet wifi</p> <p>Monitoring/management system by Exter 70 screen</p> <p>B&amp;G Hydra 2000 repeater</p> <p>Kohler 11.5 KW remote control</p> <p>Smart TV Screen with Navigation info and internet</p> <p>ANT – Master Processor for B &amp; G System to integrate all electronic navigation equipment</p>
<b>GALLEY</b>	<p>Located between salon and crew accommodation for optimized privacy. A smart sliding hatch offers open (family) communication between salon and galley and easy hand-out.</p> <p>Full headroom up to 200 cm</p> <p>Good cupboard, locker, drawer space, fitted out for seaworthy stowing, incl. under the floor.</p> <p>Corian worktop with plenty and with deep integrated sink.</p> <p>Seaworthy lay-out and provisions amongst raised water locking edges.</p> <p>Pots &amp; pans, crockery, glasswork, cutlery</p>

<b>STORAGE</b>	Extra storage throughout accommodation below the floors. Including wine cooler under owner's floor.
<b>ENGINE ROOM</b>	Professional, clean and spacious walk-around set-up. Entrance by interior watertight door First-class installations and materials and flexible mounted where required. All installations very well accessible. Headroom up to 125 / 195cm First class piping of aluminium, steel, ABS/PVC with liquid/and flow/ indication and labelled installations / valves. Aluminium/ anti-slip profile removable floor-plating.
<b>FOREPEAK</b>	Accessible by twin watertight deck hatches. Offering storage space for fenders, anchor chain/lines and mooring lines. Mechanical air ventilation / Wooden slat protection lining.
<b>LAZARETTE</b>	Accessible by hydr. opening watertight transom integrated hatch and deck hatch. Storage space for deck gear, bicycles, small tender and toys and so on. Access to steering gear, 220V ship-shore plug/cable and transformer. Natural air ventilation.
<b>BATHING</b>	By transom integrated hatch hydr. opening hatch transforming into a teak laid bathing platform with stainless steel/teak removable ladder. Hot/cold water shower in lazarette. Bezenzoni stainless steel removable side swimming ladder.
<b>BOARDING</b>	Hydromar stern built in hydraulic intractable aluminium passarelle with lighting, railing and teak grating. Control in lazarette and 3x by wireless remote controls + by monitor/control system.
<b>DOMESTICS</b>	
<b>REFRIGERATORS</b>	2 x Bosch stainless steel 200 lt. each. Front load model, new in 2/2020. 1 x Frigoboat mini fridge, top load model integrated between deck-house and outer deck. Compressor new 2019.
<b>FREEZERS</b>	2 x Bosch stainless steel ±100 lt. each. Front load model, new in 2/2020
<b>COOKER/STOVE</b>	4 ring Miele KM490 induction. Stainless steel fiddle (pan-holder) semi cardanic
<b>OVEN</b>	Electric Miele type: H 4280B hot air circulation, with Grill Page 24/30
<b>GRILL/MICROWAVE</b>	Electric Miele M8151
<b>COOKER HOOD</b>	Miele
<b>COFFEE MACHINE</b>	Miele Nespresso CA 3660. (2013)
<b>DISHWASHER</b>	Miele professional G 7856, new in 3/2023 Professional model 20 minutes wash and dry
<b>WASHING MACHINE</b>	Miele W2663. Serviced in 2019 by Miele
<b>DRYER</b>	Miele T4323. Serviced in 2019 by Miele
<b>VACUUM CLEANER</b>	Rowenta Cityspace.

## SECURITY & SAFETY

<b>LIFE SAVING AIDS</b>	<p>2 x Avon life rafts, 1 x 8 persons and 1 x 6 persons. In containers. Serviced 2019.</p> <p>1 x in Lazarette, 1 x in SB outer lockers seat. In 3/2023 serviced and certified.</p> <p>1 x Life ring horseshoe model with autom. Flashlight, new in 3/2023.</p> <p>1 x John Buoy MK4 man overboard with flashlight inflatable type.</p> <p>8 x Bolero 150N life jackets with tethers stowed in deck-house, serviced 2021. In combi with 8x harnesses with life lines. Distress flares several in container. Serviced in 01/2021</p> <p>In 03/2023 life vests serviced and certified.</p>
<b>FIRE FIGHTING</b>	<p>14 x portable fire-extinguishers, serviced in 01/2021</p> <p>Fire Pro 1200 C, automatic fire-fighting system with smoke detector and one portable CO2 fire-extinguisher in engine room, new in 2021. In 3/2023 complete system tested and certified.</p> <p>In 03/2023 all fire extinguishers tested and certified.</p> <p>Manual extern engine room ventilation in-take shut-off (at pilot-house) and firefighting system activation.</p> <p>Smoke detection system with 5 smoke detectors throughout accommodation + technical areas with acoustical/ visual alarm.</p> <p>Fire blanket in galley/ engine room pilot-house.</p>
<b>BURGLARY ALARM</b>	<p>Visonic system with infrared sensors and approach sensors. throughout interior/ entrance sliding door/ deck hatches. Alarm signal in mast and crew area and flash-light in mast. Home base alert system.</p>
<b>ALARM CONTROL PANELS</b>	<p>For bilges on monitoring system in wheelhouse, messroom and captain's cabin + alert to home base.</p>
<b>GMDSS</b>	<p>VHF. Upon press button/the system automatically alerts coastguard with Yacht's name and position.</p>
<b>EPIRB</b>	<p>Mc Murdo Hand-held, serviced in 01/2021. In box with hydrostatic release at aft railing.</p> <p>World-wide satellite emergency beacon. In 3/2023 testeod and hydrostatic release replaced and certified.</p>
<b>SAFE</b>	<p>Two electronic built-in model, owners' cabin and captain cabin.</p>
<b>CAMERA</b>	<p>1 x from mast spreader to aft deck, monitored in crew mess.</p> <p>1 x engine room, monitored from deck house</p>
<b>OTHER</b>	<p>Set of international code/ nation guests/ flags</p>

## TENDER & TOYS

---

<b>DINGHY</b>	<p>Novurama 4.20 m inflatable/rigid bottom equipped with nav. lights, First Aid kit, fire Extinguisher</p> <p>Outboard: Yamaha 50Hp 4-stroke. In 1/2023 general service, oil change, oil and fuel filter Change, impeller change and renewal of zinc anodes. A computer analysis was carried out to Check the engine. Timing belt was changed as per every 1000 hours.</p> <p>Storage forward mast, in deck integrated, multifunctional as deck bath for kids</p> <p>Note: it takes for two persons 3 min. to place the tender in water.</p>
<b>TOYS</b>	<p>1x Wakeboard</p> <p>Bikes: Di-Blasio electric bike, folding model</p> <p>Snorkeling equipment for 6 persons</p>

## ADDITIONAL

---

<b>MANUALS</b>	<p>Most detailed usual for Jongert, includes:</p> <p>General ships-plan / Tank- Piping plan/ Electricity plan/ various / construction drawings/ original building specification.</p> <p>Manuals for most equipment in Dutch/English/language.</p> <p>Ships computer with relevant data + maintenance service + parts information.</p>
<b>SPARE PARTS</b>	Various
<b>TOOLS</b>	Several in toolbox and in workbench/+ electric drill

## OTHER MAINTENANCE WORKS

---

<b>SPRING 2023</b>	<p>Bathroom ventilation in all cabins serviced and where necessary replaced.</p> <p>The monitoring system and PLC's backup battery replaced, earthleak issue resolved, breakers for main battery chargers replaced.</p> <p>Rigg inspection by A+ Rigging Palma de Mallorca with report.</p>
--------------------	---

Haas International offers the details of this vessel in good faith but cannot guarantee or warrant the accuracy of this information nor warrant the condition of the vessel. A buyer should instruct his agents, or his surveyors, to investigate such details as the buyer desires validated. This vessel is offered subject to prior sale, price change, or withdrawal without notice.











## ITHAKA



On anchorage



Bathing platform





Foredeck with dinghy storage



Deckhouse





Mainsail with in-boom furling



Aft deck





Cockpit



Deckhouse





Salon Portside



Salon starboard side





Owner stateroom



Owner bathroom





Twin guest cabin 1

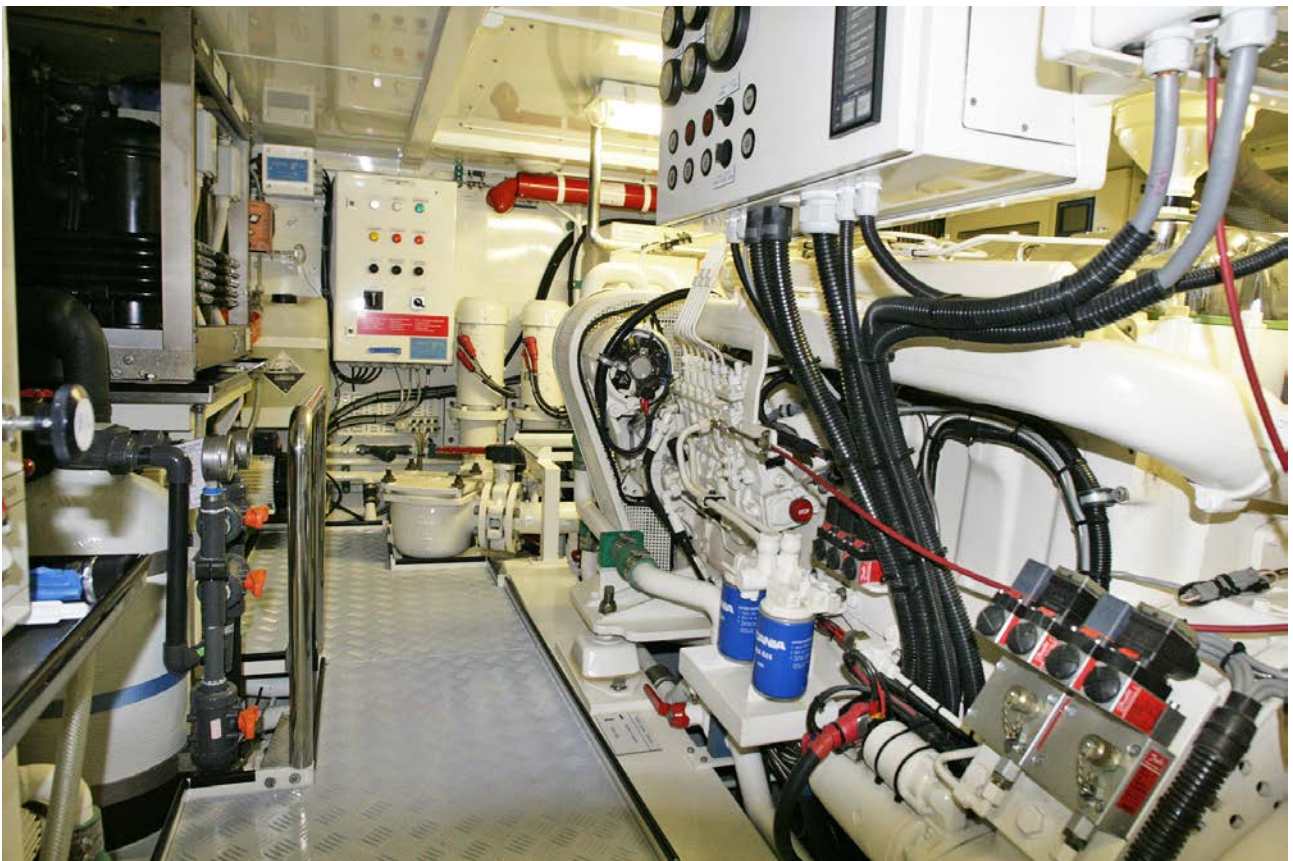


Galley





Crew mess

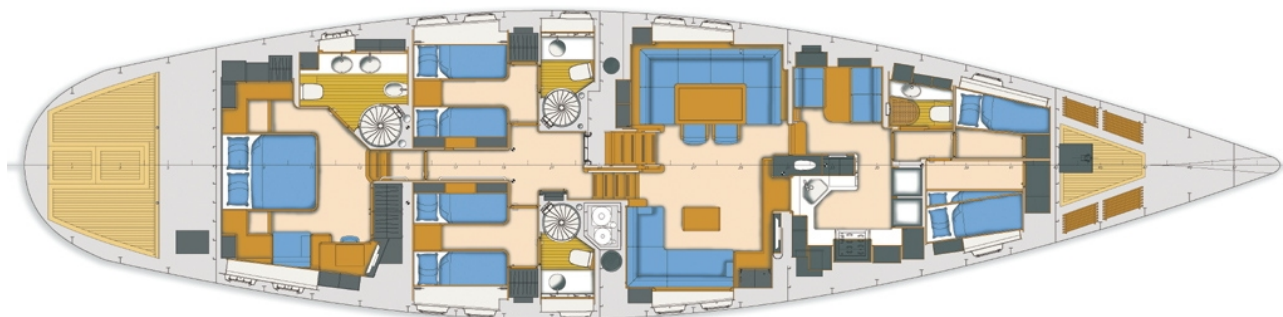
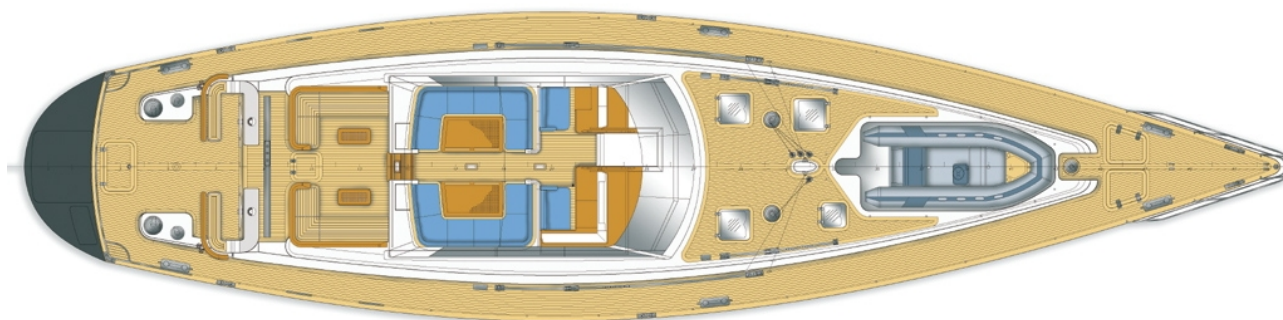


Engine room





Deck layout



Interior layout